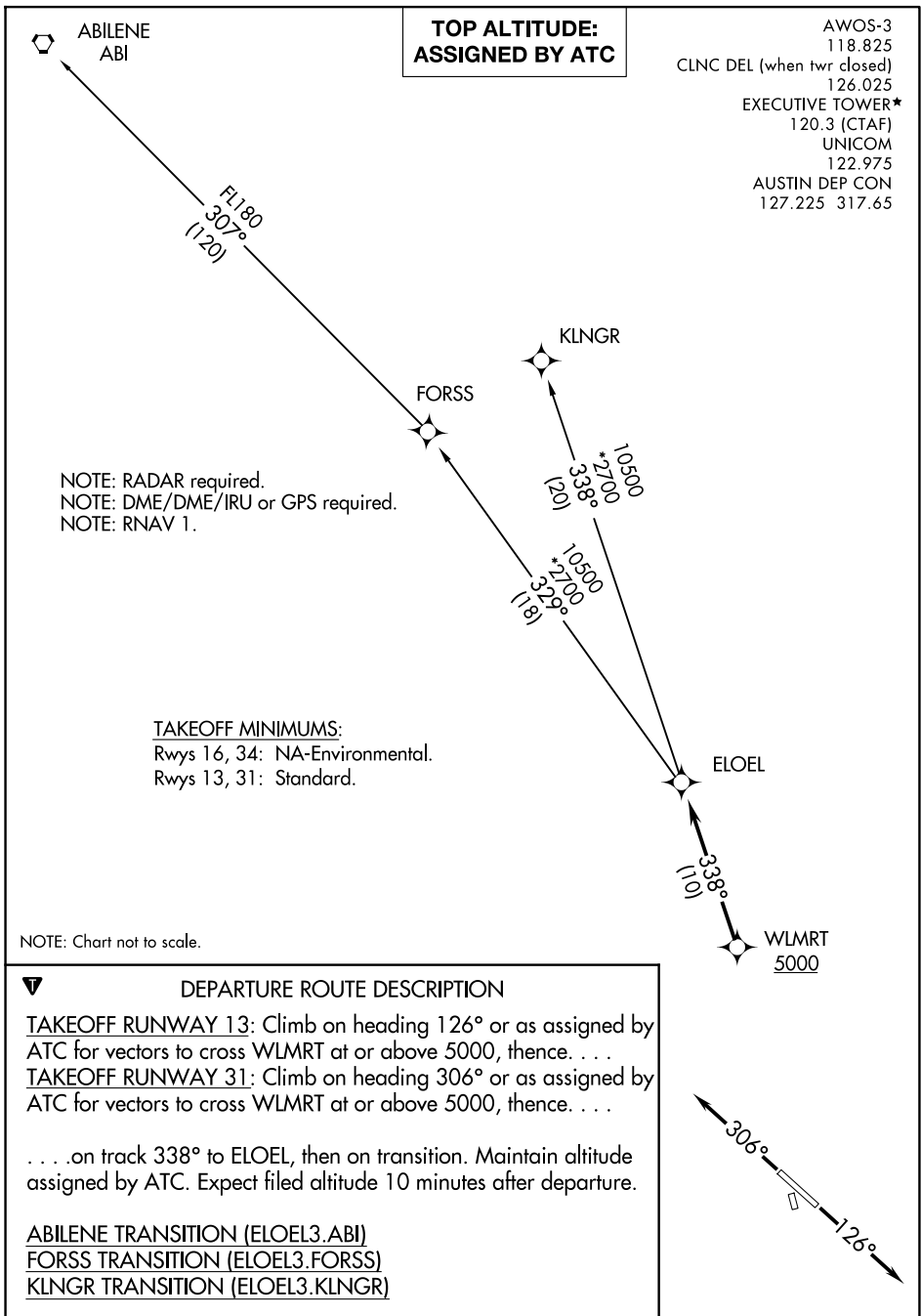


# ELOEL THREE DEPARTURE (RNAV)

AUSTIN, TEXAS



**TOP ALTITUDE:  
ASSIGNED BY ATC**

AWOS-3  
118.825  
CLNC DEL (when twr closed)  
126.025  
EXECUTIVE TOWER\*  
120.3 (CTAF)  
UNICOM  
122.975  
AUSTIN DEP CON  
127.225 317.65

NOTE: RADAR required.  
NOTE: DME/DME/IRU or GPS required.  
NOTE: RNAV 1.

TAKEOFF MINIMUMS:  
Rwys 16, 34: NA-Environmental.  
Rwys 13, 31: Standard.

NOTE: Chart not to scale.

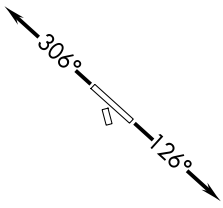
**DEPARTURE ROUTE DESCRIPTION**

TAKEOFF RUNWAY 13: Climb on heading 126° or as assigned by ATC for vectors to cross WLMRT at or above 5000, thence. . . .

TAKEOFF RUNWAY 31: Climb on heading 306° or as assigned by ATC for vectors to cross WLMRT at or above 5000, thence. . . .

. . . on track 338° to ELOEL, then on transition. Maintain altitude assigned by ATC. Expect filed altitude 10 minutes after departure.

ABILENE TRANSITION (ELOEL3.ABI)  
FORSS TRANSITION (ELOEL3.FORSS)  
KLNGR TRANSITION (ELOEL3.KLNGR)



SC-3, 16 APR 2026 to 14 MAY 2026

SC-3, 16 APR 2026 to 14 MAY 2026

# ELOEL THREE DEPARTURE (RNAV)

(ELOEL3.ELOEL) 22APR21

AUSTIN, TEXAS  
AUSTIN EXEC (EDC)