

VORTAC LVZ 111.6 Chan 53	APP CRS 064°	Rwy Ldg TDZE Apt Elev	N/A N/A 1357
----------------------------------------------	------------------------	-----------------------------	-----------------------------------------

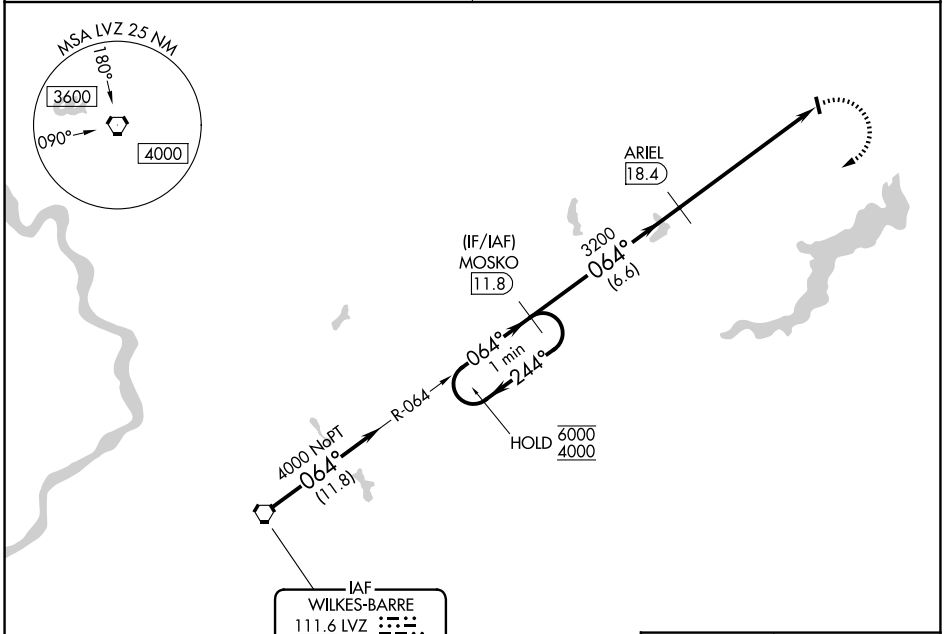
VOR-A
CHERRY RIDGE (N30)

DME required.

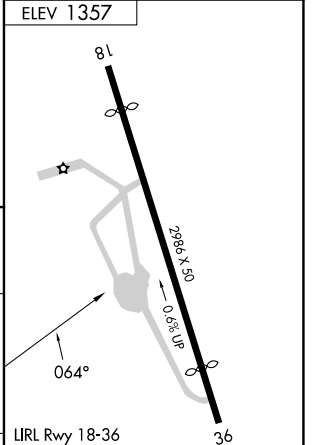
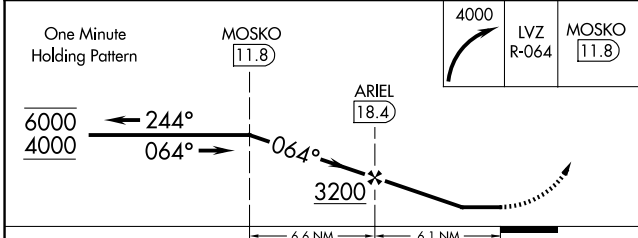
▼ Procedure NA at night. Helicopter visibility reduction below 1 SM NA.
▲ NA Obtain local altimeter setting on CTAF; when not received, use Wilkes-Barre/Scranton altimeter setting and increase all MDAs 120 feet.

MISSED APPROACH: Climbing right turn to 4000 on LVZ VORTAC R-064 to MOSKO 11.8 DME and hold.

WILKES-BARRE APP CON **120.95 256.7** UNICOM **122.8 (CTAF)**



Procedure NA for arrival on LVZ VORTAC airway radials 047 CW 094.



CATEGORY	A	B	C	D	FAF to MAP 6.1 NM					
CIRCLING	2180-1¼ 823 (900-1¼)		NA		Knots	60	90	120	150	180
					Min:Sec	6:06	4:04	3:03	2:26	2:02

NE-4, 16 APR 2026 to 14 MAY 2026

NE-4, 16 APR 2026 to 14 MAY 2026