

WAAS CH 58106 W05A	APP CRS 053°	Rwy Ldg TDZE 541 Apt Elev 545	5002
----------------------------------------	------------------------	---------------------------------------------------	-------------

RNAV (GPS) RWY 5

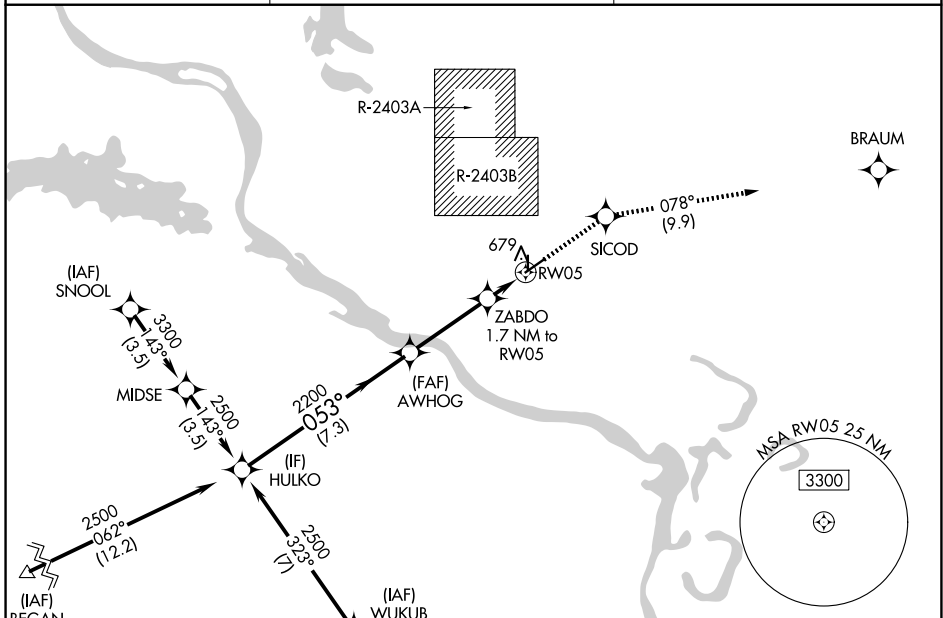
NORTH LITTLE ROCK MUNI (ORK)

RNP APCH - GPS.

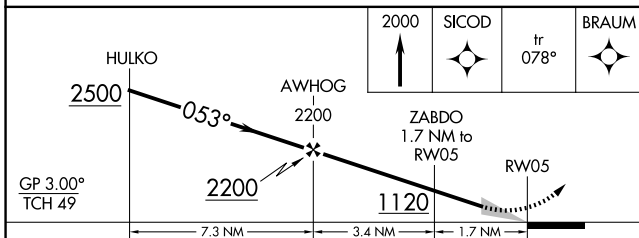
⚠ Circling NA for Cats B and C north of Rwy 5-23 when restricted area R-2403B in use. For uncompensated Baro-VNAV systems, LNAV/VNAV NA below -16°C or above 54°C.

MISSED APPROACH: Climb to 2000 direct SICOD and track 078° to BRAUM and hold.

AWOS-3PT 123.775	LITTLE ROCK APP CON 119.5 306.2	UNICOM 123.075 (CTAF) 0
----------------------------	-------------------------------------------	-----------------------------------



Procedure NA for arrivals at BEGAN on V124 southwest bound.



CATEGORY	A	B	C	D
LPV DA	854-7/8	313 (400-7/8)		NA
LNAV/VNAV DA	986-13/8	445 (500-13/8)		NA
LNAV MDA	1000-1	459 (500-1)	1000-13/8 459 (500-13/8)	NA
CIRCLING	1040-1	495 (500-1)	1080-1 1/2 535 (600-1 1/2)	NA

ELEV 545	TDZE 541
----------	----------

REIL Rwy 5, 17 and 23 0
MIRL Rwy 5-23 and 17-35 0

SC-1, 16 APR 2026 to 14 MAY 2026

SC-1, 16 APR 2026 to 14 MAY 2026