

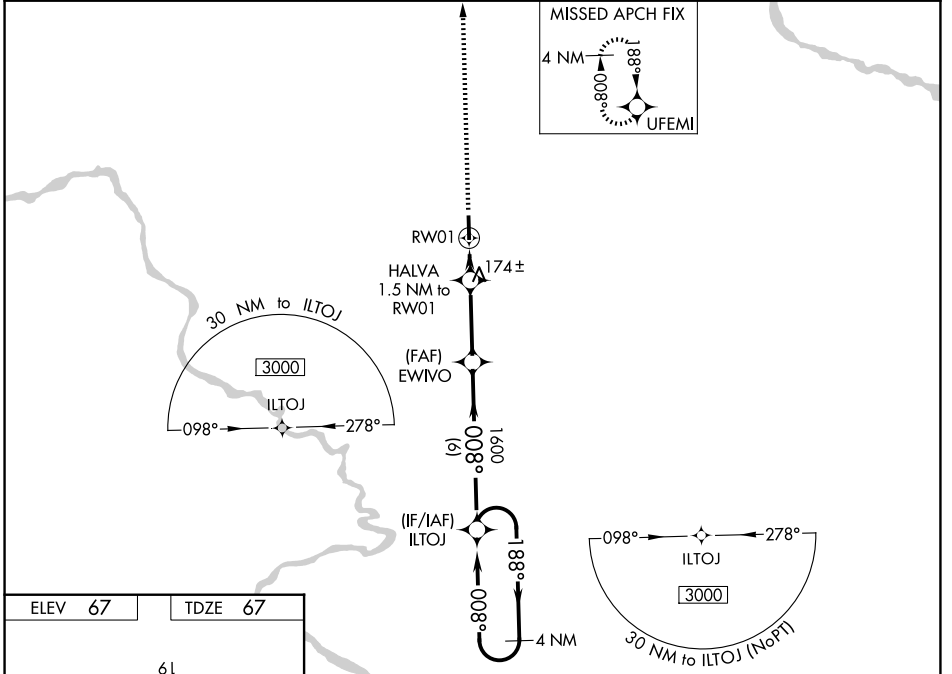
WAAS CH 70637 W01A	APP CRS 008°	Rwy Ldg TDZE Apt Elev	4501 67 67
----------------------------------------	------------------------	-----------------------------	---------------------------------------

RNAV (GPS) RWY 1
TRI-COUNTY AT HENRY JOYNER FLD (A.SJ)

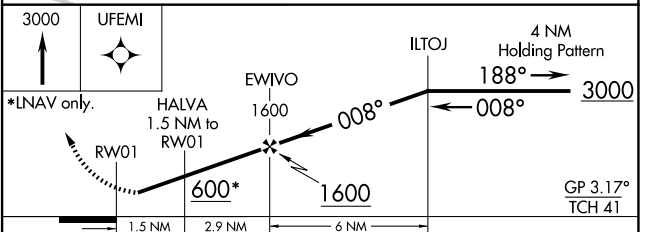
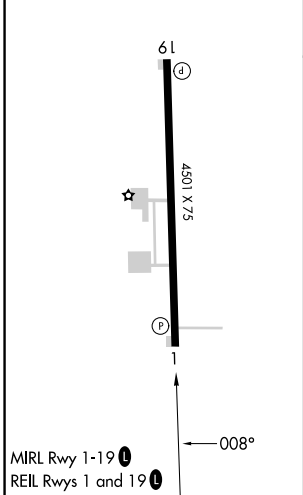
⚠ DME/DME RNP-0.3 NA. Night Landing: Rwy 1 NA. When local altimeter setting not received, use Franklin altimeter setting and increase all DA 67 feet and all MDA 80 feet; increase LPV all Cats visibility 1/8 mile, LNAV Cats C/D visibility 3/8 mile and Circling Cat D visibility 1/4 mile. Baro-VNAV NA when using Franklin altimeter setting. For uncompensated Baro-VNAV systems, LNAV/VNAV NA below -15°C (5°F) or above 54°C (130°F). Helicopter visibility reduction below 1 SM NA.

MISSED APPROACH:
Climb to 3000 direct
UFEMI and hold, continue
climb-in-hold to 3000.

AWOS-3 119.075	WASHINGTON CENTER 123.85 279.65	UNICOM 122.8 (CTAF) 📻
--------------------------	-------------------------------------------	----------------------------------------



ELEV 67	TDZE 67
---------	---------



CATEGORY	A	B	C	D
LPV DA	359-1	292 (300-1)		NA
LNAV/VNAV DA	322-1	255 (300-1)		NA
LNAV MDA	440-1		373 (400-1)	
CIRCLING	580-1	513 (600-1)	580-1½ 513 (600-1½)	820-2½ 753 (800-2½)

SE-2, 16 APR 2026 to 14 MAY 2026

SE-2, 16 APR 2026 to 14 MAY 2026