

WAAS CH <b>49241</b> <b>W12A</b>	APP CRS <b>127°</b>	Rwy Ldg <b>4553</b> TDZE <b>268</b> Apt Elev <b>273</b>
--	------------------------	---

# RNAV (GPS) RWY 12

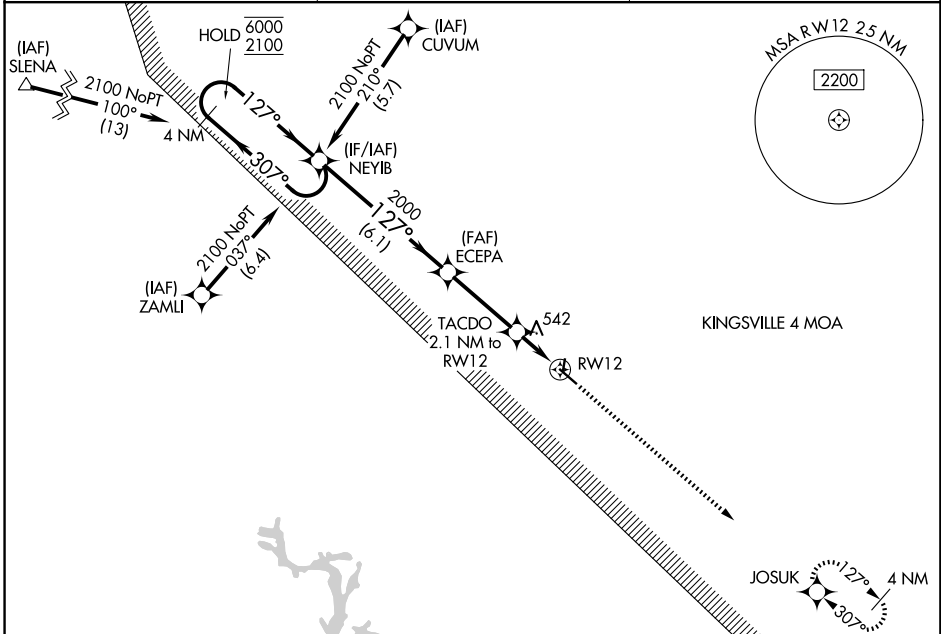
BEEVILLE MUNI (BEA)

RNP APCH - GPS.

**⚠** Rwy 12 helicopter visibility reduction below 3/4 SM NA. Circling Rwy 18 and 36 NA at night.  
**⚠** For uncompensated Baro-VNAV systems, LNAV/VNAV NA below -15°C or above 54°C.

MISSED APPROACH: Climb to 2000 direct JOSUK and hold.

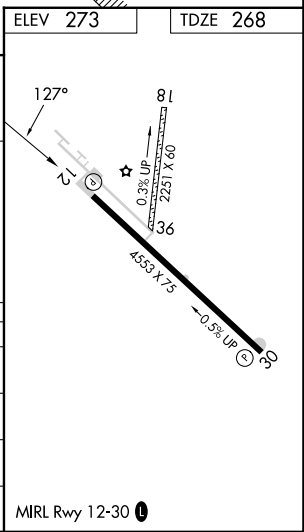
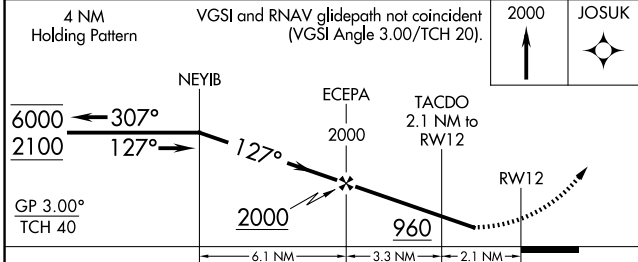
AWOS-3 <b>118.675</b>	HOUSTON CENTER <b>134.6 322.5</b>	UNICOM <b>122.8 (CTAF) 0</b>
--------------------------	--------------------------------------	---------------------------------



SC-3, 16 APR 2026 to 14 MAY 2026

SC-3, 16 APR 2026 to 14 MAY 2026

ELEV 273	TDZE 268
----------	----------



CATEGORY	A	B	C	D
LPV DA	518-1	250 (300-1)		NA
LNAV/VNAV DA	800-1½	532 (600-1½)		NA
LNAV MDA	800-1	532 (600-1)	800-1½ 532 (600-1½)	NA
CIRCLING	800-1 527 (600-1)	1000-1 727 (800-1)	1000-2 727 (800-2)	NA