

WAAS CH <b>53741</b> <b>W30A</b>	APP CRS <b>307°</b>	Rwy Ldg TDZE Apt Elev	<b>4553</b> <b>262</b> <b>273</b>
--	------------------------	-----------------------------	---

# RNAV (GPS) RWY 30

BEEVILLE MUNI (BEA)

RNP APCH - GPS.

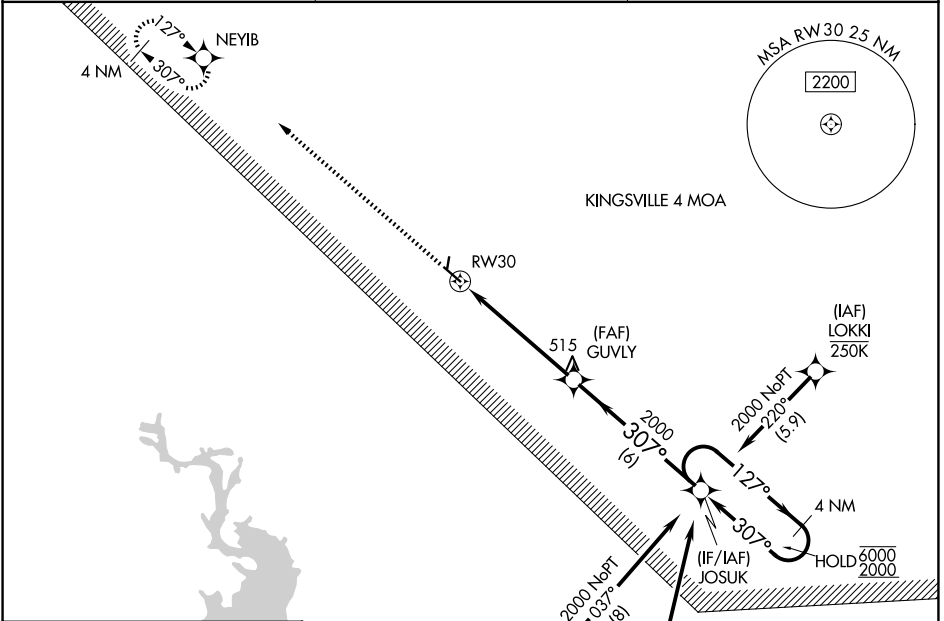
**▼** Rwy 30 helicopter visibility reduction below 3/4 SM NA. For uncompensated Baro-VNAV systems, LNAV/VNAV NA below -15°C or above 54°C. Circling NA to Rwy 18 and 36.

MISSED APPROACH: Climb to 2100 direct NEYIB and hold.

AWOS-3  
**118.675**

HOUSTON CENTER  
**134.6 322.5**

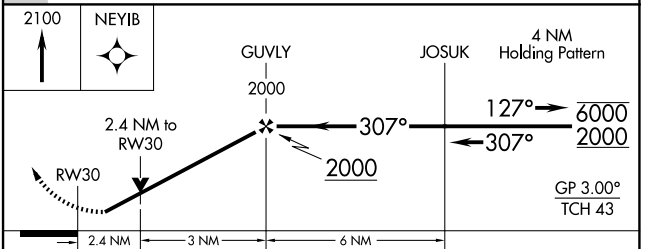
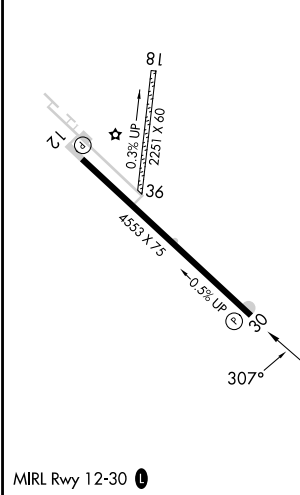
UNICOM  
**122.8 (CTAF) 0**



SC-3, 16 APR 2026 to 14 MAY 2026

SC-3, 16 APR 2026 to 14 MAY 2026

ELEV 273	TDZE 262
----------	----------



CATEGORY	A	B	C	D
LPV DA	517-1 255 (300-1)			NA
LNAV/VNAV DA	540-1 278 (300-1)			NA
LNAV MDA	1060-1 798 (800-1)	1060-1¼ 798 (800-1¼)	1060-2½ 798 (800-2½)	NA
CIRCLING	1060-1 787 (800-1)	1060-1¼ 787 (800-1¼)	1060-2½ 787 (800-2½)	NA