

CANTON, ILLINOIS

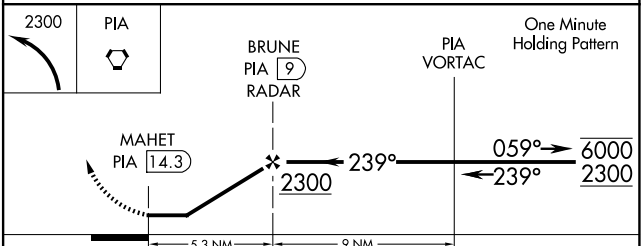
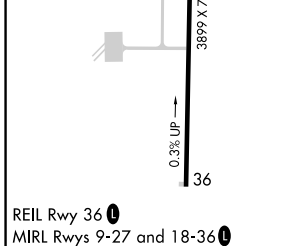
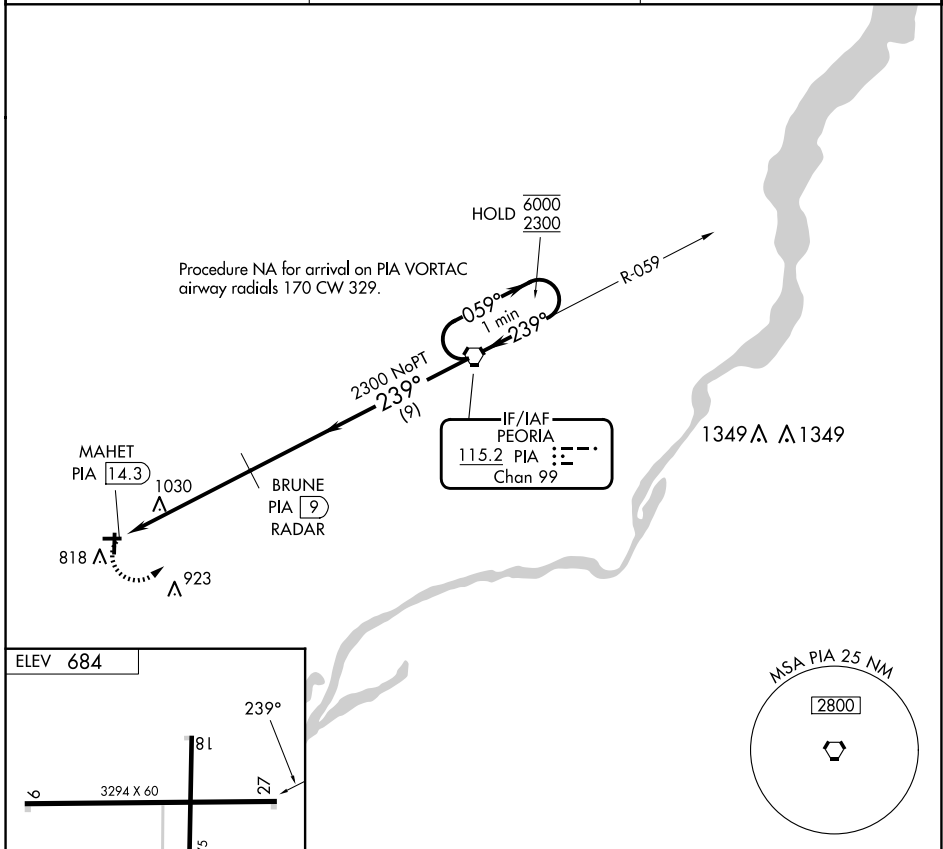
AL-5900 (FAA)

25163

VORTAC PIA 115.2 Chan 99	APP CRS 239°	Rwy Ldg TDZE Apt Elev	N/A N/A 684
--	------------------------	-----------------------------	--

VOR-A
INGERSOLL (CTK)

DME or RADAR required.		MISSED APPROACH: Climbing left turn to 2300 direct PIA VORTAC and hold.
Use PIA altimeter setting; when not received, procedure NA.		
PIA ASOS 126.1 282.2	SAINT LOUIS APP CON 125.8 269.2	UNICOM 122.8 (CTAF)



FAF to MAP 5.3 NM					
Knots	60	90	120	150	180
Min:Sec	5:18	3:32	2:39	2:07	1:46

CATEGORY	A	B	C	D
CIRCLING	1400-1 716 (800-1)	1440-1 756 (800-1)	1440-2¼ 756 (800-2¼)	NA

CANTON, ILLINOIS
Amdt 9 12JUN25

40°34'N-90°04'W

INGERSOLL (CTK)
VOR-A

EC-3, 16 APR 2026 to 14 MAY 2026

EC-3, 16 APR 2026 to 14 MAY 2026