

(DAWNN1.DAWNN) 23334
DAWNN ONE DEPARTURE

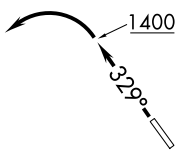
AL-5902 (FAA)

INDIANAPOLIS METRO (UMP)
 INDIANAPOLIS, INDIANA

**TOP ALTITUDE:
 ASSIGNED BY ATC**

AWOS-3
 119.375
 CLNC DEL
 121.625
 INDIANAPOLIS DEP CON
 127.15 317.8

BRICKYARD
 116.3 VHP
 Chan 110



TERRE HAUTE
 115.3 TTH
 Chan 100

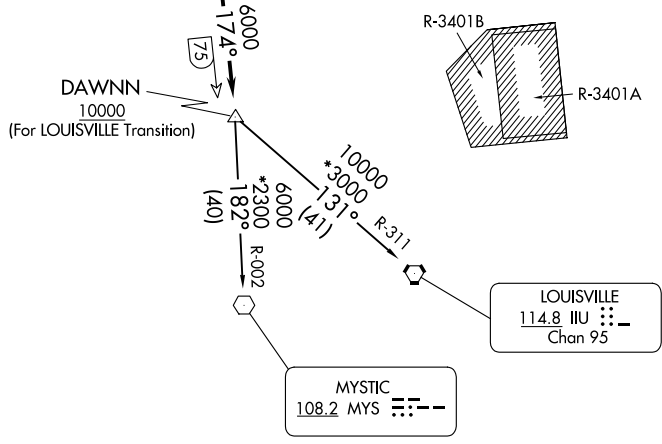
R-174
 (28)
 SNEVA
 RADAR

TAKEOFF MINIMUMS:
 Rwy 15: NA-obstacles.
 Rwy 33: Standard.

HOOSIER
 110.2 OOM
 Chan 39

R-113
 (47)
 FOYTT
 RADAR

EC-2, 16 APR 2026 to 14 MAY 2026



EC-2, 16 APR 2026 to 14 MAY 2026

- NOTE: RADAR required.
- NOTE: Select appropriate localizer/DME frequency/channel prior to departure.
- NOTE: Turbojets accelerate to 250K until reaching 10000, if unable advise ATC.
- NOTE: Assigned to aircraft with a requested altitude of 11000 or above.

(NARRATIVE ON FOLLOWING PAGE)

NOTE: Chart not to scale.

DAWNN ONE DEPARTURE
 (DAWNN1.DAWNN) 07DEC17

INDIANAPOLIS, INDIANA
 INDIANAPOLIS METRO (UMP)



DEPARTURE ROUTE DESCRIPTION

TAKEOFF RWY 33: Climb heading 329° to 1400 before turning left.
Then on assigned heading to assigned altitude. Thence....

DEPARTING ALL OTHER AUTHORIZED RUNWAYS/AIRPORTS: Climb on
assigned heading to assigned altitude. Thence....

....on RADAR vectors to join VHP R-174 to DAWNN INT then on transition or
assigned route. Expect clearance to requested altitude ten minutes after departure.

LOUISVILLE TRANSITION (DAWNN1.IIU): From over DAWNN INT on IIU R-311 to
IIU VORTAC.

MYSTIC TRANSITION (DAWNN1.MYS): From over DAWNN INT on MYS R-002 to
MYS VOR.

EC-2, 16 APR 2026 to 14 MAY 2026

EC-2, 16 APR 2026 to 14 MAY 2026