

WAAS CH <b>86447</b> <b>W15A</b>	APP CRS <b>149°</b>	Rwy Ldg TDZE Apt Elev	<b>3848</b> <b>805</b> <b>811</b>
--	------------------------	-----------------------------	---

# RNAV (GPS) RWY 15

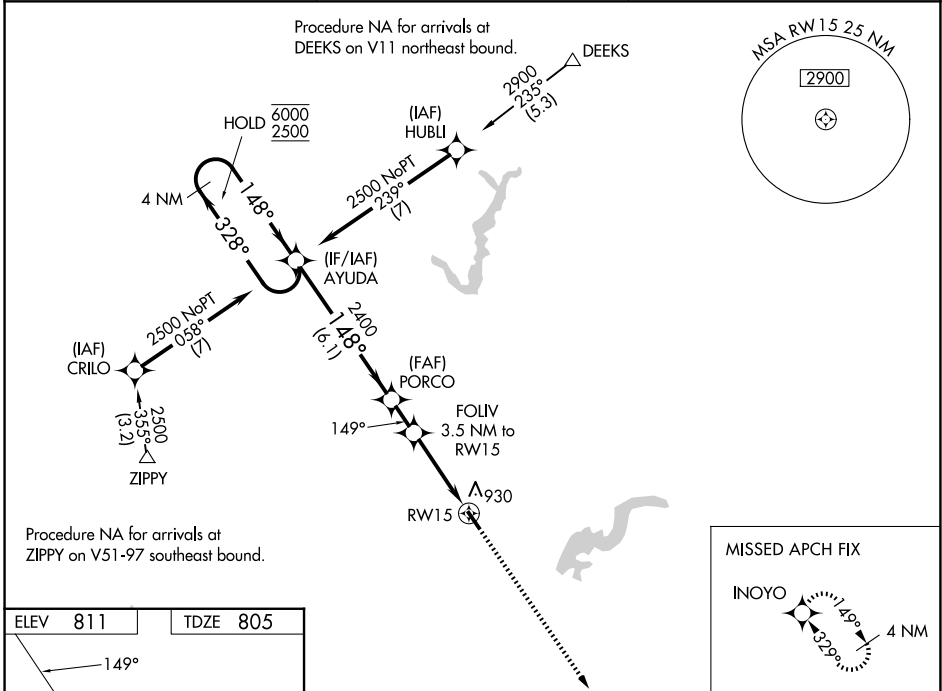
INDIANAPOLIS METRO (UMP)

RNP APCH - GPS.

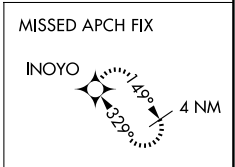
- Baro-VNAV and VDP NA when using IND altimeter setting. Rwy 15 helicopter visibility reduction below 3/4 SM NA. For uncompensated Baro-VNAV systems, LNAV/VNAV NA below -16°C or above 54°C.
- When local altimeter setting not received, use IND altimeter setting and increase LPV DA to 1098 feet. Increase LNAV/VNAV DA to 1173 feet; increase all MDAs 60 feet and LNAV visibility Cat C 1/8 SM.

**MISSED APPROACH:**  
Climb to 2900 direct INOYO and hold.

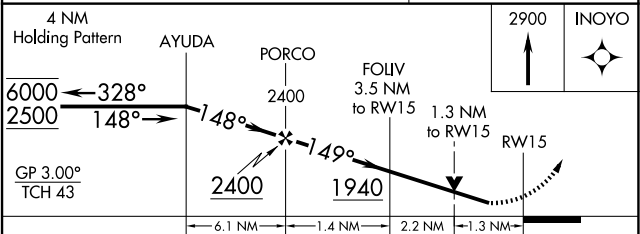
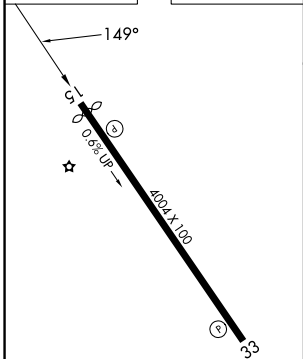
AWOS-3PT <b>119.375</b>	INDIANAPOLIS APP CON <b>127.15 317.8</b>	UNICOM <b>123.0 (CTAF) 0</b>
----------------------------	---	---------------------------------



Procedure NA for arrivals at ZIPPY on V51-97 southeast bound.



ELEV 811	TDZE 805
----------	----------



CATEGORY	A	B	C	D
LPV DA		1055-1	250 (300-1)	NA
LNAV/VNAV DA		1130-1	325 (400-1)	NA
LNAV MDA	1240-1	435 (500-1)	1240-1 1/4 435 (500-1 1/4)	NA
CIRCLING	1320-1 509 (600-1)	1340-1 529 (600-1)	1340-1 1/2 529 (600-1 1/2)	NA

MIRL Rwy 15-33 0  
REIL Rwy 15 and 33 0

EC-2, 16 APR 2026 to 14 MAY 2026

EC-2, 16 APR 2026 to 14 MAY 2026