

WAAS CH 58037 W32A	APP CRS 319°	Rwy Ldg 5004 TDZE 30 Apt Elev 32
--	------------------------	---

RNAV (GPS) RWY 32

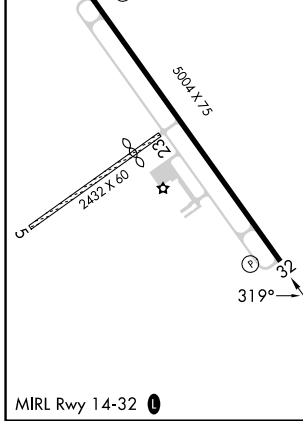
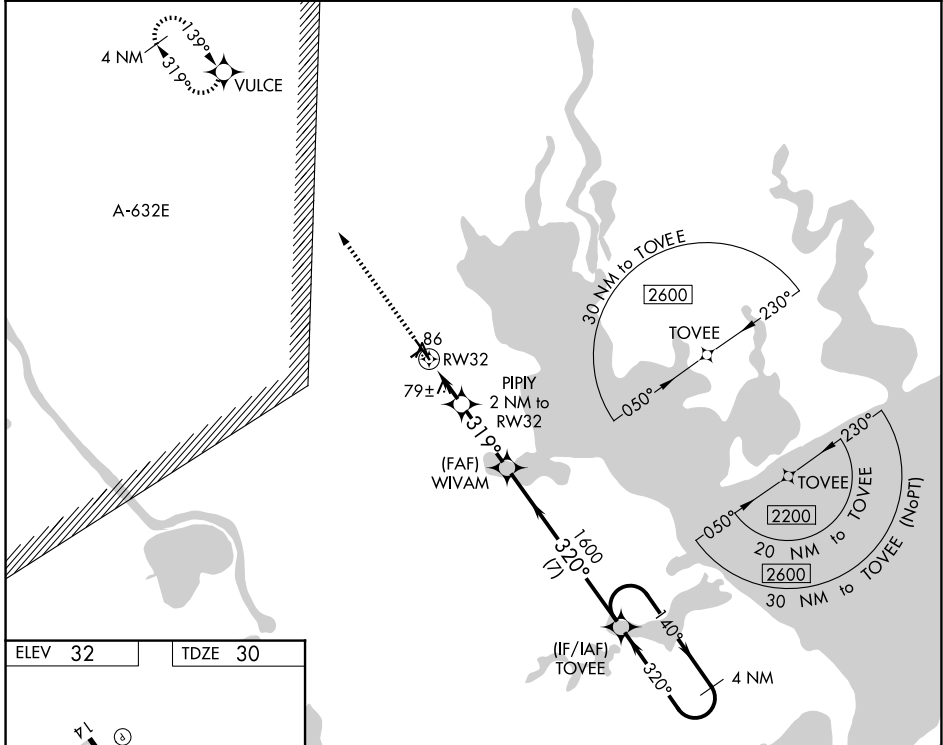
CALHOUN COUNTY (PKV)

RNP APCH - GPS.

▼ When local altimeter setting not received, use Victoria altimeter setting and increase all MDAs 60 feet and LNAV visibility Cat C ¼ SM and LP visibility Cat C ½ SM. Rwy 32 helicopter visibility reduction below 1 SM NA. Straight-In Rwy 32 NA at night, Circling Rwy 32 NA at night.

MISSED APPROACH:
Climb to 2200 direct VULCE and hold.

AWOS-3 118.275	HOUSTON CENTER 135.05 353.6	UNICOM 122.8 (CTAF) 0
--------------------------	---------------------------------------	---------------------------------



2200	VULCE	TOVEE	4 NM Holding Pattern	
↑	✧	WIVAM	140° → 2200	
PIPIY 2 NM to RWY 32	≤ 3.00° TCH 45	WIVAM	← 320°	
RWY 32	319°	1600	700	
→ 2 NM	→ 2.8 NM	→ 7 NM		
CATEGORY	A	B	C	D
LP MDA	340-1	310 (400-1)	340-7/8 310 (400-7/8)	NA
LNAV MDA	400-1 370 (400-1)			NA
CIRCLING	520-1	488 (500-1)	560-1½ 528 (600-1½)	NA

SC-5, 16 APR 2026 to 14 MAY 2026

SC-5, 16 APR 2026 to 14 MAY 2026