

PORT LAVACA, TEXAS

AL-5904 (FAA)

26078

VORTAC PSX <b>117.3</b> Chan <b>120</b>	APP CRS <b>244°</b>	Rwy Ldg TDZE Apt Elev <b>N/A</b> <b>N/A</b> <b>32</b>
---	------------------------	--

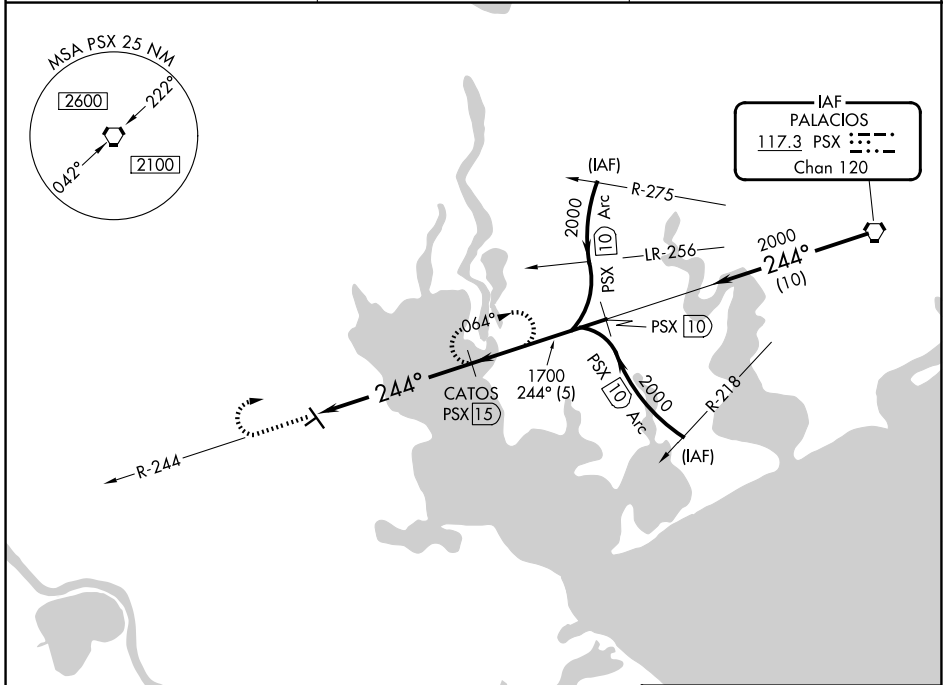
# VOR/DME-A

CALHOUN COUNTY (PKV)

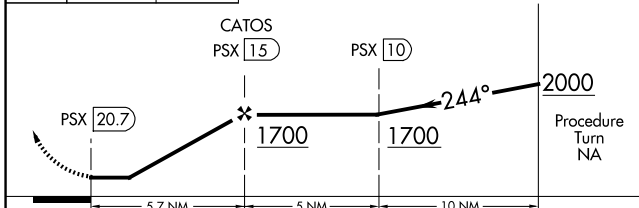
**⚠** When local altimeter setting not received, use Victoria altimeter setting. Circling NA to Rwy 5 and 23. Night landing: Rwy 32 NA.

MISSED APPROACH: Climb to 2100, then right turn via PSX VORTAC R-244 to CATOS/PSX 15 DME and hold.

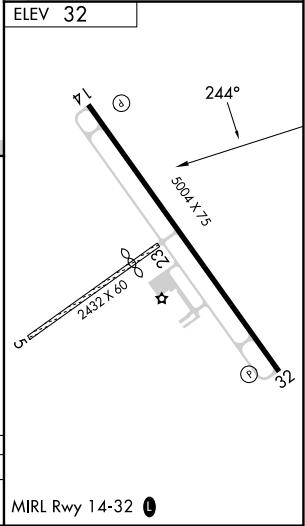
AWOS-3 <b>118.275</b>	HOUSTON CENTER <b>135.05 353.6</b>	UNICOM <b>122.8 (CTAF)</b>
--------------------------	---------------------------------------	-------------------------------



2100 ↑	PSX R-244	CATOS PSX 15
-----------	-----------	--------------



CATEGORY	A	B	C	D
CIRCLING	760-1 728 (800-1)	760-1¼ 728 (800-1¼)	760-2 728 (800-2)	NA



SC-5, 16 APR 2026 to 14 MAY 2026

SC-5, 16 APR 2026 to 14 MAY 2026

PORT LAVACA, TEXAS  
Amdt 4D 08OCT20

28°39'N-96°41'W

CALHOUN COUNTY (PKV)  
VOR/DME-A