

VORTAC LCH 113.4 Chan 81	APP CRS 060°	Rwy Idg 2700 TDZE 18 Apt Elev 18
--	------------------------	---

VOR/DME or GPS RWY 7

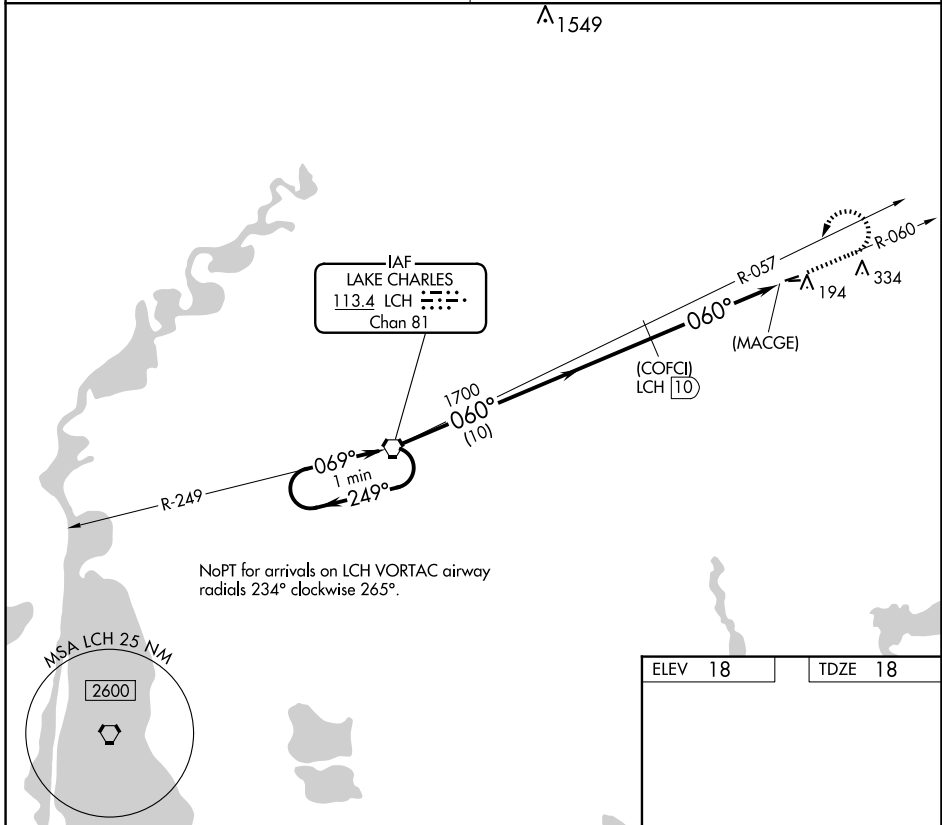
WELSH (6R1)

▼ Use Lake Charles altimeter setting. Procedure NA at night.
▲ NA Circling NA to Rwys 9 and 27.

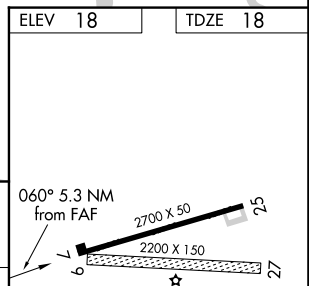
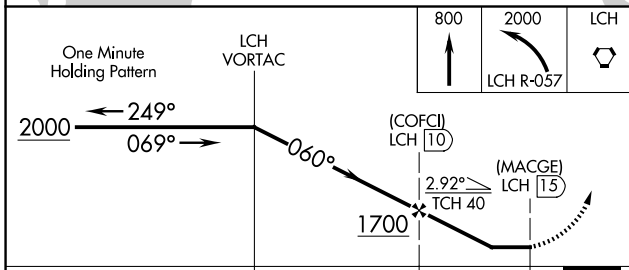
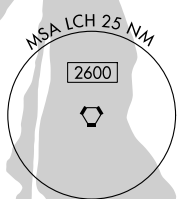
MISSED APPROACH: Climb to 800 then climbing left turn to 2000 via LCH R-057 to LCH VORTAC.

LAKE CHARLES APP CON ★ **119.8 282.3**

UNICOM **122.8** (CTAF)



NoPT for arrivals on LCH VORTAC airway radials 234° clockwise 265°.



CATEGORY	A	B	C	D
S-7	540-1	522 (600-1)		NA
CIRCLING	600-1	582 (600-1)		NA

MIRL Rwy 7-25

SC-4, 16 APR 2026 to 14 MAY 2026

SC-4, 16 APR 2026 to 14 MAY 2026