

WAAS CH <b>86510</b> <b>W35A</b>	APP CRS <b>342°</b>	Rwy ldg <b>5003</b> TDZE <b>121</b> Apt Elev <b>121</b>
--	------------------------	---

# RNAV (GPS) RWY 35

NATCHITOCHES RGNL (I.E.R.)

RNP APCH.

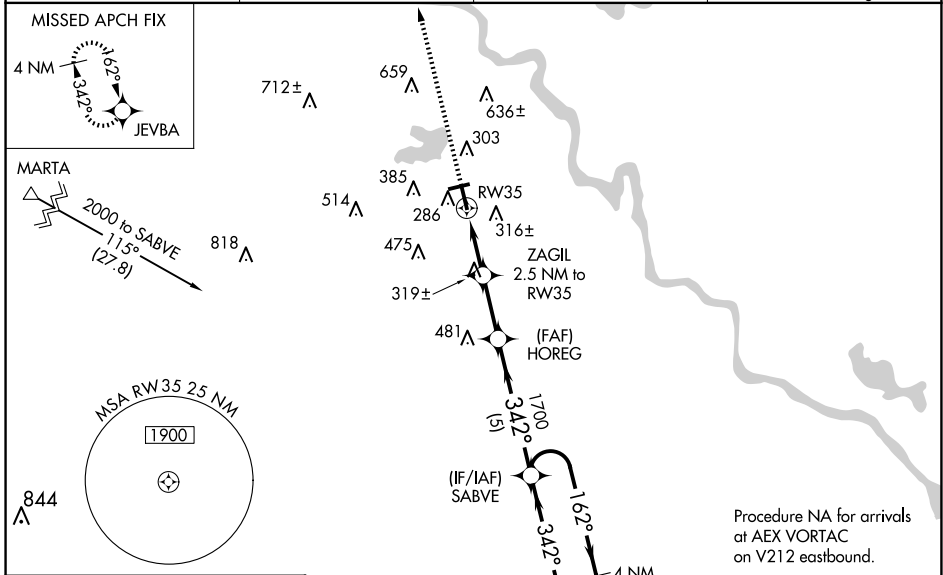
▼ Inop table does not apply to LPV all Cats, and LNAV Cats A and B. Baro-VNAV NA when using Alexandria Intl altimeter setting. For uncompensated Baro-VNAV systems, LNAV/VNAV NA below -15°C or above 54°C. Helicopter visibility reduction below ¾ SM NA. When local altimeter setting not received, use Alexandria Intl altimeter setting: Increase LPV DA to 462 feet; increase LNAV/VNAV DA to 577 feet and visibility all Cats ¼ SM; increase all MDA 100 feet and LNAV Cat C visibility ¼ SM and Circling Cat C visibility ½ SM. For inoperative ODALS, increase LNAV/VNAV all Cats visibility ½ mile.

ODALS



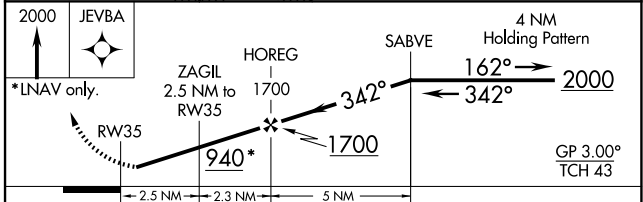
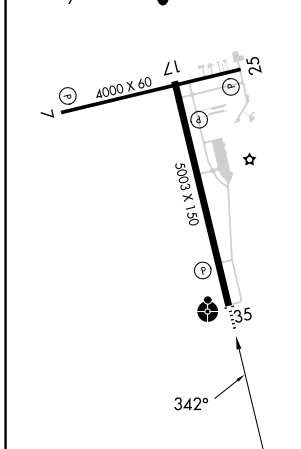
MISSED APPROACH:  
Climb to 2000 direct JEVBA and hold.

AWOS-3 <b>119.025</b>	POLK APP CON <b>125.4 302.2</b>	GCO <b>135.075</b>	UNICOM <b>122.8 (CTAF)</b>
--------------------------	------------------------------------	-----------------------	-------------------------------



ELEV 121	TDZE 121
----------	----------

MIRL Rwy 7-25 and 17-35  
REIL Rwy 7 and 17



CATEGORY	A	B	C	D
LPV DA		371-1	250 (300-1)	NA
LNAV/VNAV DA		486-1½	365 (400-1½)	NA
LNAV MDA	580-1	459 (500-1)	580-1½ 459 (500-1½)	NA
CIRCLING	680-1 559 (600-1)	740-1 619 (700-1)	860-2 739 (800-2)	NA

SC-4, 16 APR 2026 to 14 MAY 2026

SC-4, 16 APR 2026 to 14 MAY 2026