

APP CRS 181°	Rwy Idg 5495
	TDZE 436
	Apt Elev 436

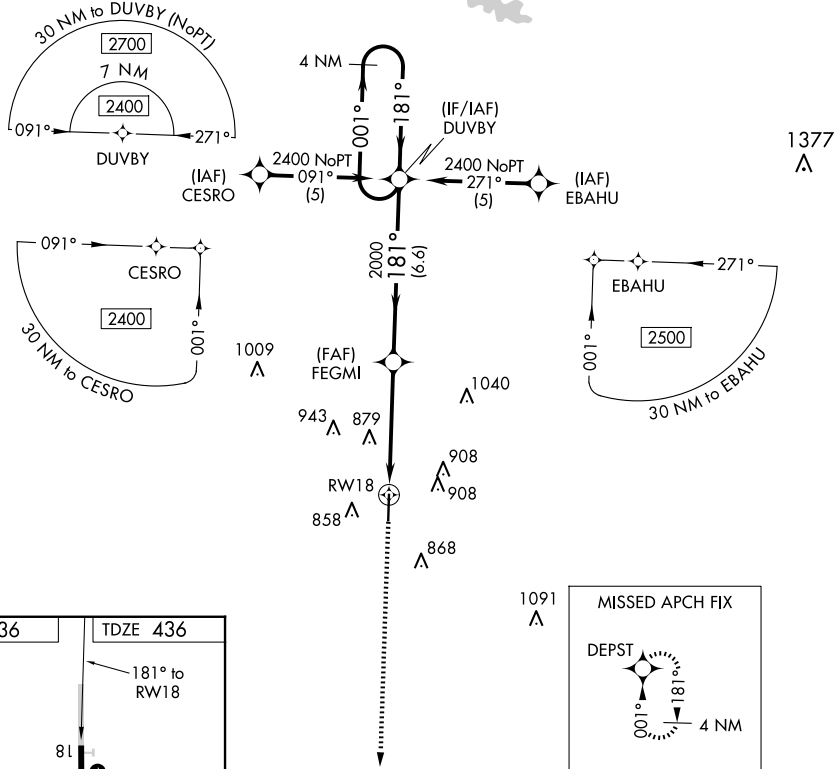
RNAV (GPS) RWY 18

MARION COUNTY-RANKIN FITE (HAB)

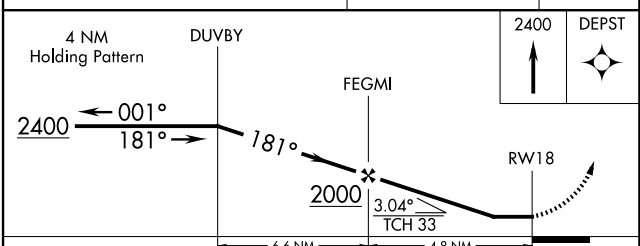
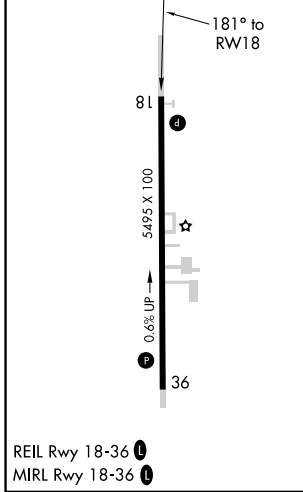
▽ DME/DME RNP-0.3 NA. Helicopter visibility reduction below 1 SM NA. Obtain local altimeter setting on CTAF; when not received, use Tupelo altimeter setting and increase all MDAs 120 feet, increase LNAV visibility Cat B ¼ SM, Cat C, D ½ SM and Circling visibilities Cat A, C, D ¼ SM. Rwy 18 Straight-in and Circling minimums NA at night.

▲ NA MISSED APPROACH: Climb to 2400 direct DEPST and hold.

MEMPHIS CENTER 127.1 269.4	UNICOM 122.8 (CTAF) 0
--------------------------------------	---------------------------------



ELEV 436	TDZE 436
----------	----------



CATEGORY	A	B	C	D
LNAV MDA	1140-1	704 (800-1)	1140-2 704 (800-2)	1140-2½ 704 (800-2½)
CIRCLING	1220-1 784 (800-1)	1260-1¼ 824 (900-1¼)	1260-2½ 824 (900-2½)	1260-2¾ 824 (900-2¾)

SE-4, 16 APR 2026 to 14 MAY 2026

SE-4, 16 APR 2026 to 14 MAY 2026