

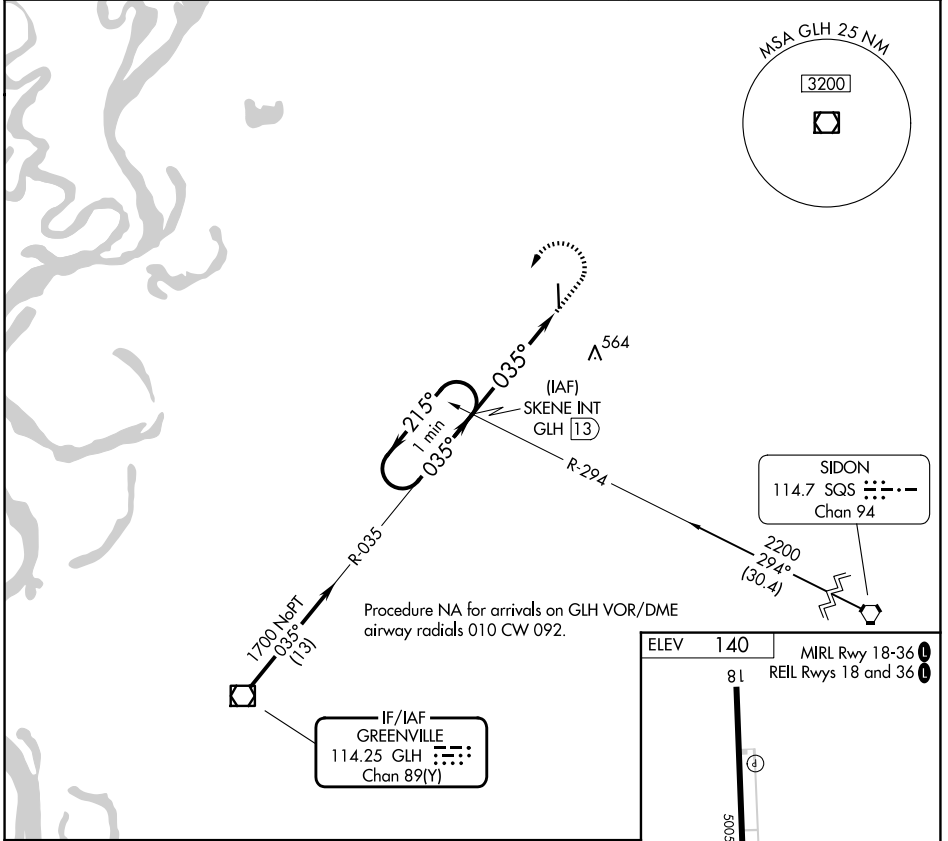
VOR/DME GLH 114.25 Chan 89 (Y)	APP CRS 035°	Rwy Ldg TDZE Apt Elev 140	N/A N/A
--	------------------------	--	--------------------------

VOR-A
CLEVELAND MUNI (R.N.V)

⚠ When local altimeter setting not received, use Greenville altimeter setting and increase all MDA 60 feet.

MISSED APPROACH: Climb to 1000 then climbing left turn to 1700 on GLH VOR/DME R-035 to SKENE INT/GLH 13 DME and hold.

AWOS-3PT 124.175	MEMPHIS CENTER 135.875 269.35	UNICOM 122.725 (CTAF) 0
----------------------------	---	-----------------------------------

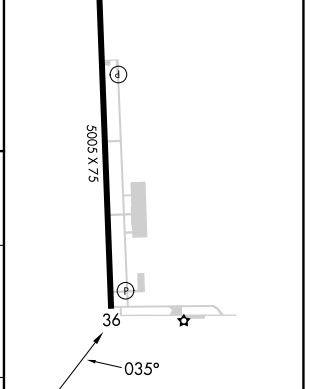
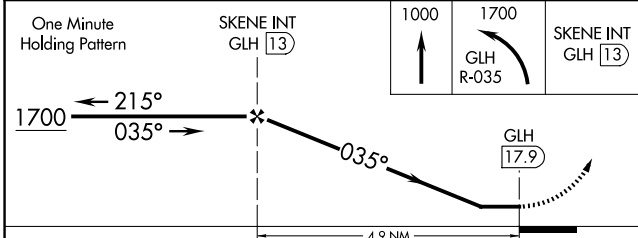


Procedure NA for arrivals on GLH VOR/DME airway radials 010 CW 092.

IF/IAF GREENVILLE
114.25 GLH
Chan 89(Y)

SIDON
114.7 SQS
Chan 94

ELEV 140 MRL Rwy 18-36
REIL Rws 18 and 36



CATEGORY	A	B	C	D	FAF to MAP 4.9 NM					
CIRCLING	880-1	740 (800-1)	900-2¼ 760 (800-2¼)	900-2½ 760 (800-2½)	Knots	60	90	120	150	180
					Min:Sec	4:54	3:16	2:27	1:58	1:38

SC-4, 16 APR 2026 to 14 MAY 2026

SC-4, 16 APR 2026 to 14 MAY 2026