

WAAS CH 65809 W01A	APP CRS 009°	Rwy Idg TDZE 588 Apt Elev 588
--	------------------------	---

RNAV (GPS) RWY 1

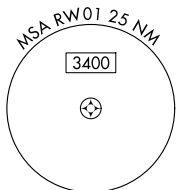
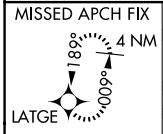
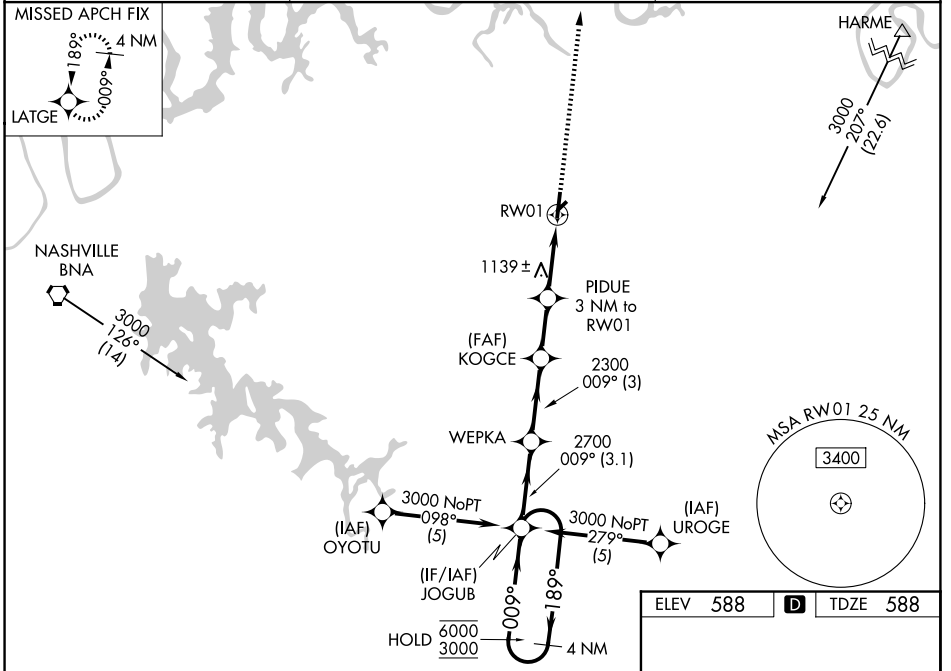
LEBANON MUNI (M54)

RNP APCH - GPS.

NA For uncompensated Baro-VNAV systems, LNAV/VNAV NA below -16° C or above 54° C. Baro-VNAV and VDP NA when using XNX altimeter setting. Rwy 1 helicopter visibility reduction below 3/4 SM NA. Circling NA to Rwy 4 and 22. When local altimeter setting not received, use XNX altimeter setting: increase LPV DA to 1121 feet and all visibilities 1/2 SM; increase LNAV/VNAV DA to 1433 feet; increase all MDAs 40 feet and Circling Cat C visibility 1/2 SM.

MISSED APPROACH:
Climb to 3000 direct LATGE and hold.

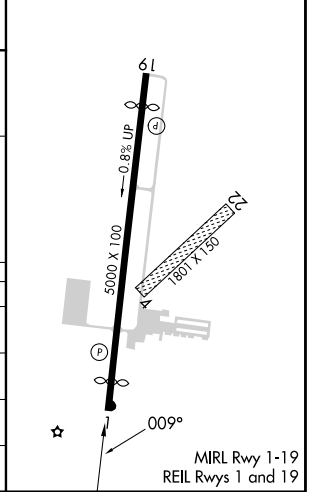
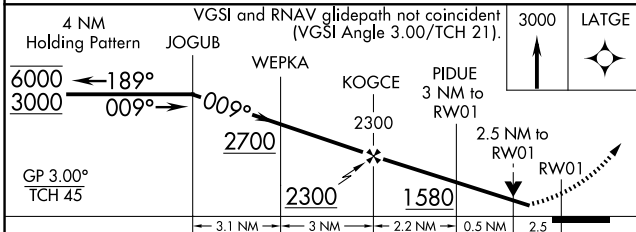
AWOS-3 118.325	NASHVILLE APP CON 118.4 360.7	UNICOM 122.725 (CTAF)
--------------------------	---	---------------------------------



SE-1, 16 APR 2026 to 14 MAY 2026

SE-1, 16 APR 2026 to 14 MAY 2026

ELEV 588	D	TDZE 588
----------	----------	----------



CATEGORY	A	B	C	D
LPV DA	1088-1 3/8 500 (500-1 3/8)			
LNAV/VNAV DA	1400-2 1/2 812 (900-2 1/2)			
LNAV MDA	1400-1 812 (900-1)	1400-1 1/4 812 (900-1 1/4)	1400-2 1/2	812 (900-2 1/2)
CIRCLING	1400-1 1/4	812 (900-1 1/4)	1440-2 1/2 852 (900-2 1/2)	1520-3 932 (1000-3)