

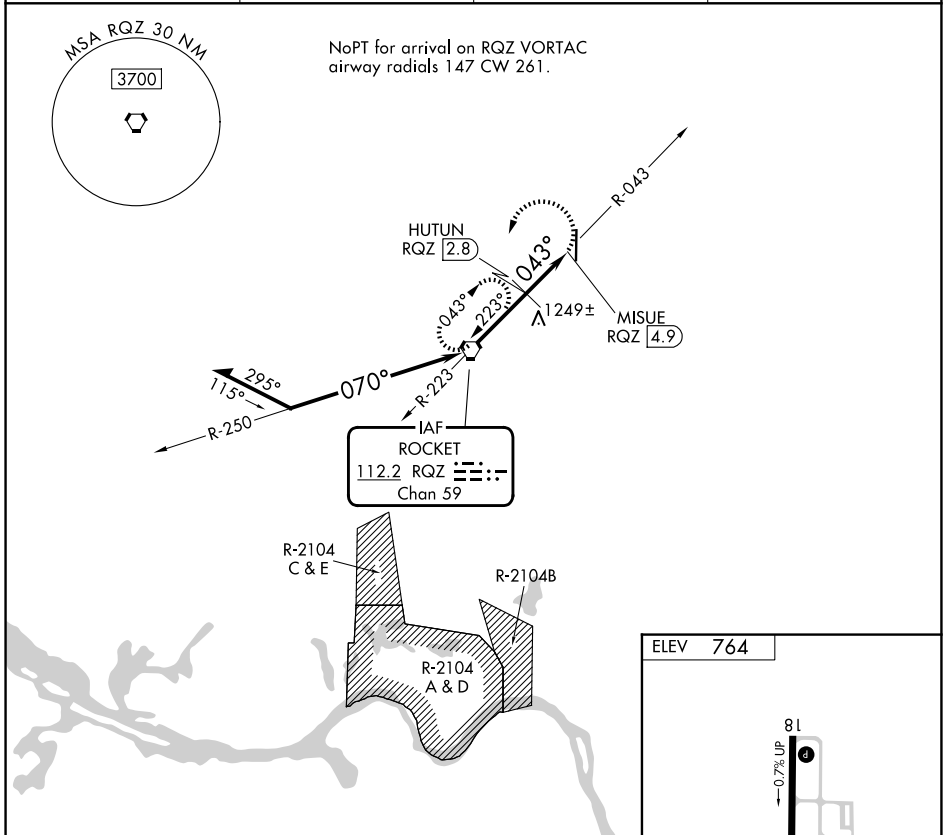
VORTAC RQZ 112.2 Chan 59	APP CRS 043°	Rwy Ldg TDZE Apt Elev N/A N/A 764
--	------------------------	--

VOR-B

HUNTSVILLE EXEC TOM SHARP JR FLD (MDQ)

DME required.		MISSED APPROACH: Climbing left turn to 3000 direct RQZ VORTAC and hold.	
---------------	--	---	--

AWOS-3PT 120.0	HUNTSVILLE APP CON* 125.6 354.1	GCO 121.725	UNICOM 123.0 (CTAF) 0
--------------------------	---	-----------------------	---------------------------------



Remain within 10 NM

RQZ VORTAC

3000 RQZ

2900

2020

HUTUN RQZ 2.8

MISUE RQZ 4.9

043°

0.1 X 00059

81

36

CATEGORY	A	B	C	D
CIRCLING	1500-1	736 (800-1)	1560-2¼ 796 (800-2¼)	2000-3 1236 (1300-3)

VOR-B

SE-4, 16 APR 2026 to 14 MAY 2026

SE-4, 16 APR 2026 to 14 MAY 2026