

WAAS CH 93623 W31A	APP CRS 316°	Rwy Idg TDZE Apt Elev	4400 660 660
--	------------------------	-----------------------------	---

RNAV (GPS) RWY 31

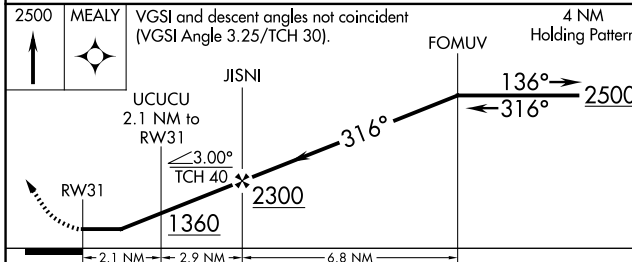
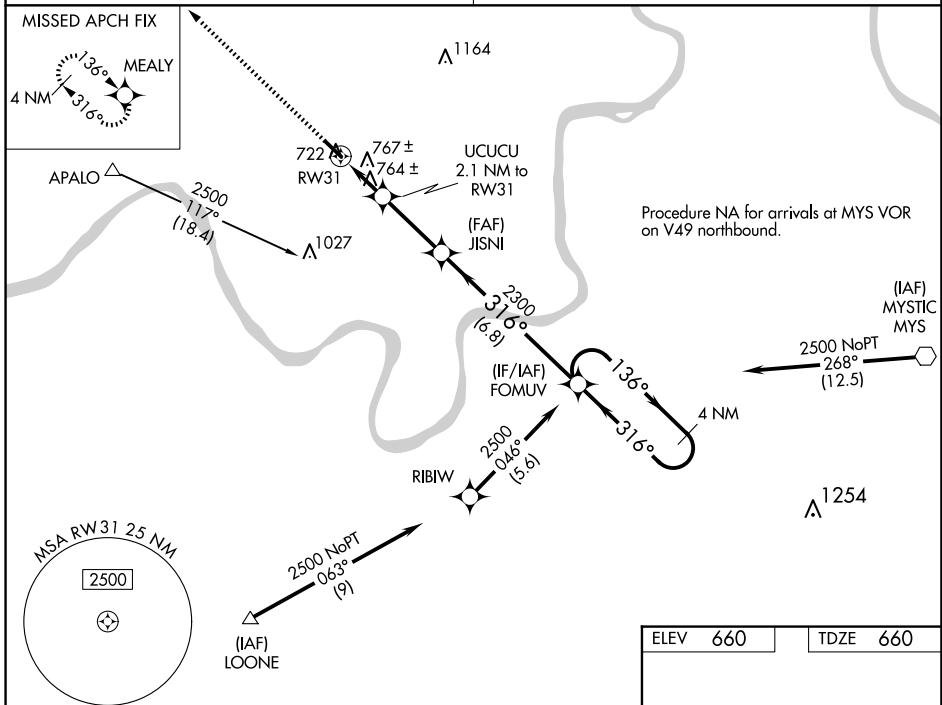
PERRY COUNTY MUNI (TEL)

NA When VGSI inop, Circling Rwy 13 NA at night. When VGSI inop, Straight-in/Circling Rwy 31 procedure NA at night. DME/DME RNP-0.3 NA. Visibility reduction by helicopters NA. Obtain local altimeter setting on CTAF; when not received, use Huntingburg altimeter setting and increase all MDA 80 feet and increase LP and LNAV Cat C visibility 1/4 mile.

MISSED APPROACH:
Climb to 2500 direct MEALY and hold.

EVANSVILLE APP CON *
124.025 290.9

UNICOM
122.7 (CTAF) 0



ELEV 660	TDZE 660
----------	----------

1.2% UP

400X75

316°

REIL Rwy 13 and 31 0

MIRL Rwy 13-31 0

CATEGORY	A	B	C	D
LP MDA		1020-1 360 (400-1)		NA
LNAV MDA		1020-1 360 (400-1)		NA
CIRCLING	1080-1 420 (500-1)	1120-1 460 (500-1)	1120-1½ 460 (500-1½)	NA

EC-2, 16 APR 2026 to 14 MAY 2026

EC-2, 16 APR 2026 to 14 MAY 2026