

|             |          |             |
|-------------|----------|-------------|
| APP CRS     | Rwy Ldg  | <b>4802</b> |
| <b>086°</b> | TDZE     | <b>605</b>  |
|             | Apt Elev | <b>606</b>  |

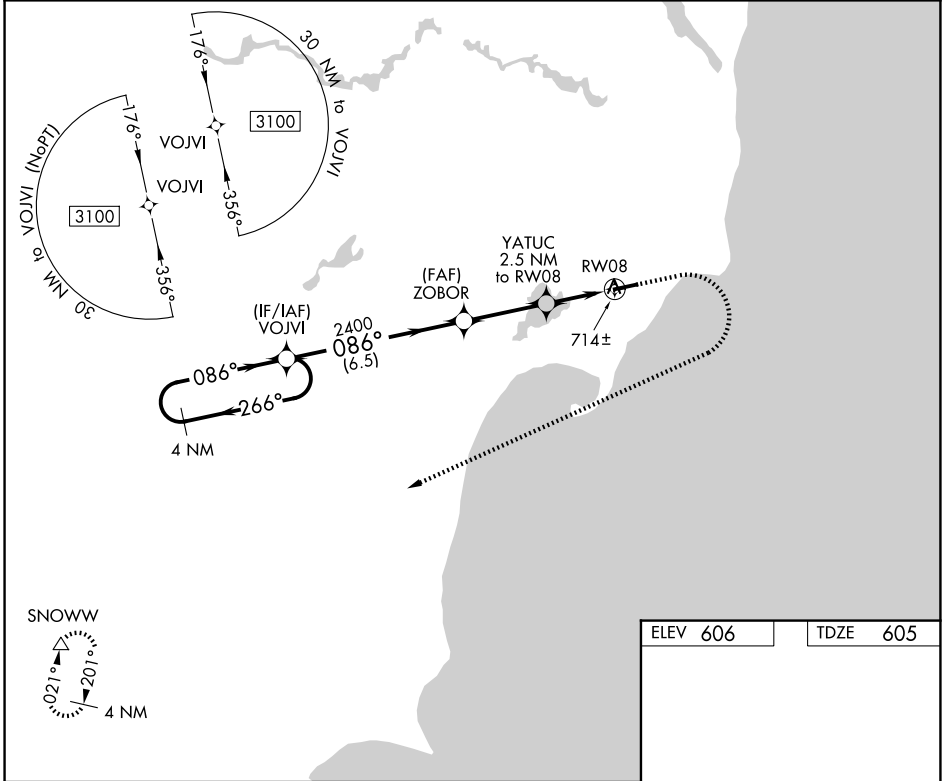
# RNAV (GPS) RWY 8

IOSCO COUNTY (6D9)

**▼** DME/DME RNP-0.3 NA. Procedure NA at night. Helicopter visibility reduction below 1 SM NA. Use Oscoda altimeter setting: when not received, use Bad Axe altimeter setting and increase all MDA 100 feet; increase LNAV Cats C and D visibilities ¼ mile, increase Circling visibility Cat C ¼ mile.

**▲ NA** MISSED APPROACH: Climb to 1100 then climbing right turn to 3500 direct SNOWW and hold.

|                            |   |                               |                 |
|----------------------------|---|-------------------------------|-----------------|
| OSC AWOS-3<br><b>118.7</b> | MINNEAPOLIS CENTER<br><b>125.475 269.45</b> | UNICOM<br><b>122.8 (CTAF)</b> | <b>122.85 0</b> |
|----------------------------|---|-------------------------------|-----------------|



EC-1, 16 APR 2026 to 14 MAY 2026

EC-1, 16 APR 2026 to 14 MAY 2026

|          |                             |             |                 |                 |       |
|----------|-----------------------------|-------------|-----------------|-----------------|-------|
|          | Visual Segment - Obstacles. |             | 1100            | 3500            | SNOWW |
|          | VOJVI                       | ZOBOR       |                 |                 |       |
| 3100     | 086°                        | 086°        | 2400            | 1440            |       |
|          | ←266°                       |             |                 |                 |       |
|          |                             |             |                 |                 |       |
|          | 6.5 NM                      | 3 NM        | 2.5 NM          |                 |       |
| CATEGORY | A                           | B           | C               | D               |       |
| LNAV MDA | 1000 - 1                    | 395 (400-1) | 1000 - 1 1/8    | 395 (400-1 1/8) |       |
| CIRCLING | 1120 - 1                    | 514 (600-1) | 1120 - 1 1/2    | 1160 - 2        |       |
|          |                             |             | 514 (600-1 1/2) | 554 (600-2)     |       |

ELEV 606      TDZE 605

REIL Rwys 8 and 26 0  
MIRL Rwy 8-26 0