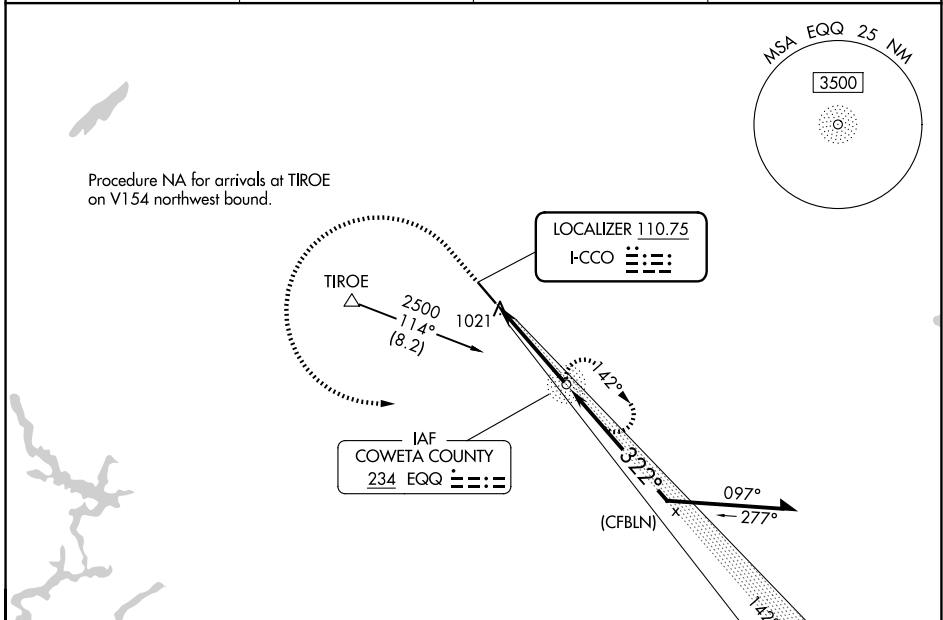


LOC I-CCO 110.75	APP CRS 322°	Rwy Ldg TDZE Apt Elev	5500 952 970
----------------------------	------------------------	-----------------------------	---

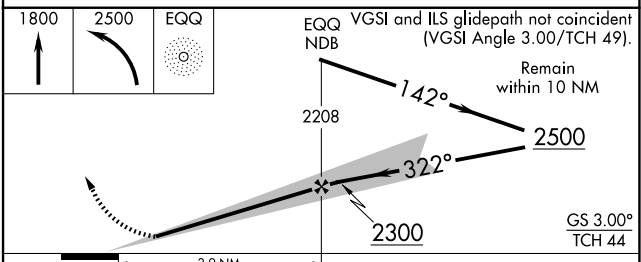
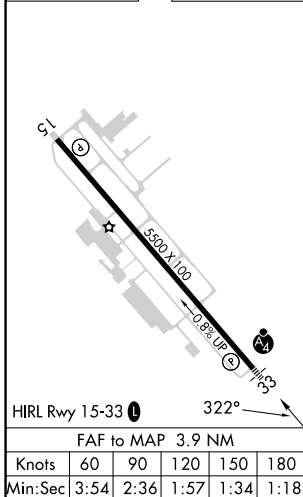
ILS or LOC RWY 33
NEWNAN COWETA COUNTY (CCO)

ADF required.	MALSF 	MISSED APPROACH: Climb to 1800 then climbing left turn to 2500 direct EQQ NDB and hold, continue climb-in-hold to 2500.

AWOS-3PT 118.975	ATLANTA APP CON 119.8 354.125	GCO 121.725	UNICOM 122.7 (CTAF)
----------------------------	---	-----------------------	-------------------------------



ELEV 970	TDZE 952
----------	----------



	3.9 NM			
CATEGORY	A	B	C	D
S-ILS 33	1 202- ³ / ₄ 250 (300- ³ / ₄)			
S-LOC 33	1340- ³ / ₄	388 (400- ³ / ₄)	1340- ⁷ / ₈	388 (400- ⁷ / ₈)
CIRCLING	1420-1	450 (500-1)	1560-1 ¹ / ₂ 590 (600-1 ¹ / ₂)	1560-2 590 (600-2)

SE-4, 16 APR 2026 to 14 MAY 2026

SE-4, 16 APR 2026 to 14 MAY 2026