

DALLAS FOUR DEPARTURE (DALL4, TTT) 27NOV25 LANCASTER, TEXAS LANCASTER RGNL (LNC)

LONE STAR DEP CON  
125.2 343.65

RADAR and DME required.

NOTE: BELCHER Transition: For aircraft inbound to the JAN, MLU, and SHV terminal areas only.  
NOTE: SOLDO Transition: ATC assigned.

**TOP ALTITUDE:  
ASSIGNED BY ATC**

BONHAM  
114.6 BYP  
Chan 93

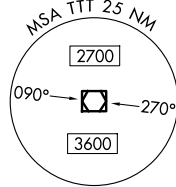
MAVERICK  
113.1 TTT  
Chan 78

GREGG COUNTY  
112.9 GGG  
Chan 76

LITTLE ROCK  
115.1 LIT  
Chan 98

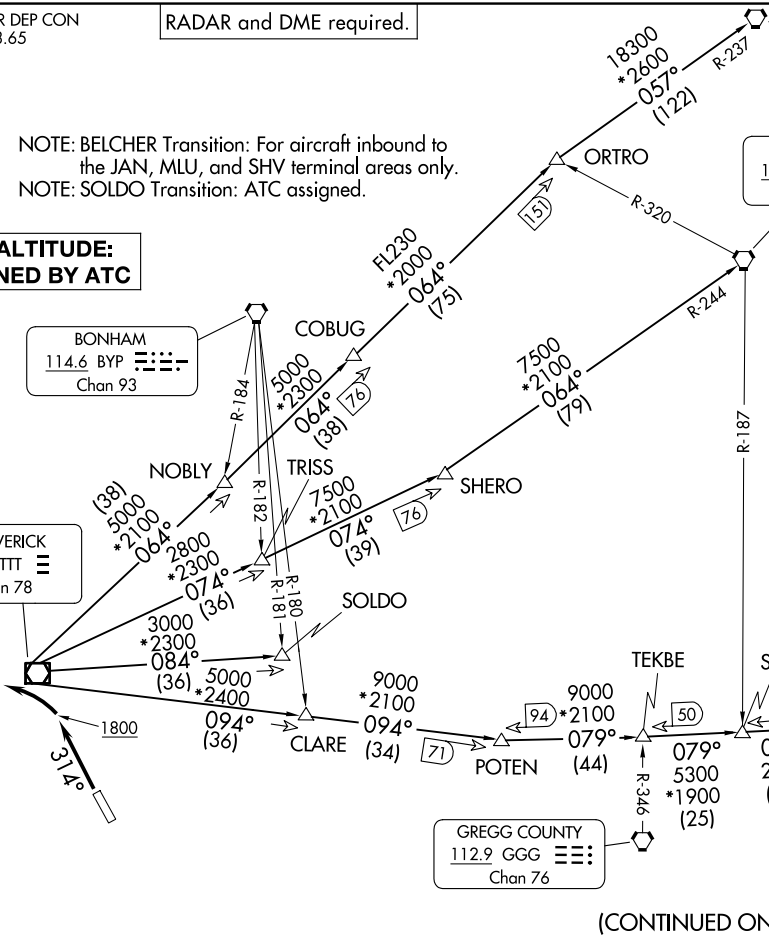
TEXARKANA  
116.3 TXK  
Chan 110

BELCHER  
117.4 EIC  
Chan 121



**TAKEOFF MINIMUMS**

Rwy 13: Standard.  
Rwy 31: 300-1¼ or standard with a minimum climb of 210'/NM to 800, or alternatively, with standard takeoff minimums and a normal 200'/NM climb gradient, takeoff must occur no later than 1300' prior to DER.



(CONTINUED ON FOLLOWING PAGE)

NOTE: Chart not to scale.

(DALL4, TTT) 25331 AL-5936 (FAA) LANCASTER RGNL (LNC) LANCASTER, TEXAS

# DALLAS FOUR DEPARTURE



## DEPARTURE ROUTE DESCRIPTION

TAKEOFF RUNWAY 31: Climb on heading 314° to 1800 before turning left.

Fly assigned heading for RADAR vectors to appropriate route. Maintain ATC assigned altitude.

BELCHER TRANSITION (DALL4.EIC): From over TTT VOR/DME on TTT R-094 to POTEN, then on EIC R-259 to EIC VORTAC.

LITTLE ROCK TRANSITION (DALL4.LIT): From over TTT VOR/DME on TTT R-064 to ORTRO, then on LIT R-237 to LIT VORTAC.

SOLDO TRANSITION (DALL4.SOLDO): From over TTT VOR/DME on TTT R-084 to SOLDO.

TEXARKANA TRANSITION (DALL4.TXK): From over TTT VOR/DME on TTT R-074 to SHERO, then on TXK R-244 to TXK VORTAC.

SC-2, 16 APR 2026 to 14 MAY 2026

SC-2, 16 APR 2026 to 14 MAY 2026