

WAAS CH 42505 W31A	APP CRS 314°	Rwy Ldg TDZE Apt Elev	6500 487 501
--	------------------------	-----------------------------	---

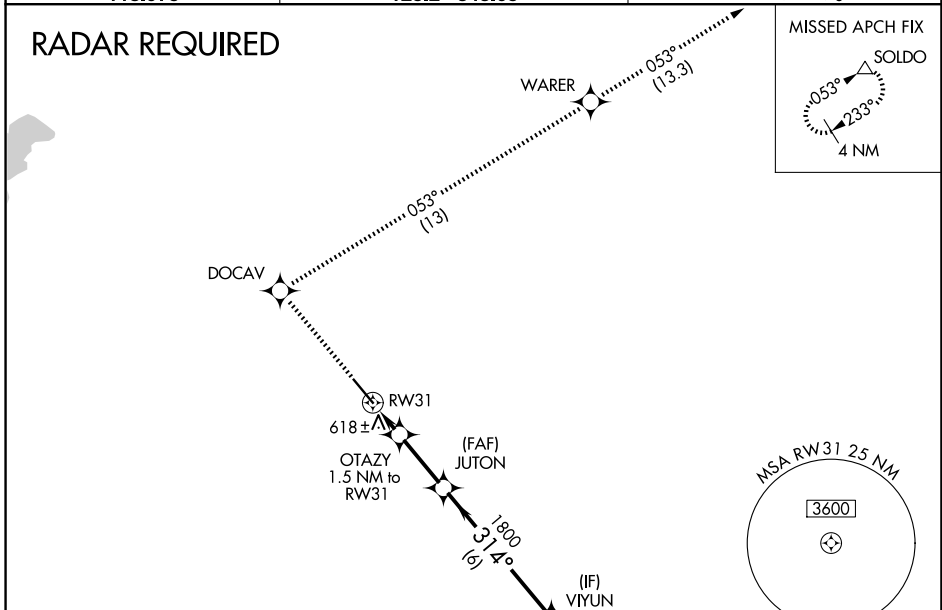
RNAV (GPS) RWY 31

LANCASTER RGNL (LNC)

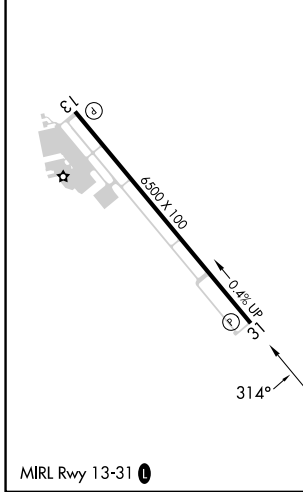
⚠ For uncompensated Baro-VNAV systems, LNAV/VNAV NA below -16°C (4°F) or above 47°C (116°F). DME/DME RNP-0.3 NA. Baro-VNAV NA when using Dallas Exec altimeter setting. When local altimeter setting not received, use Dallas Exec altimeter setting and increase LPV DA to 732 feet; increase LNAV/VNAV DA to 970 feet and visibility all Cats ¼ SM; increase all MDAs 60 feet and LNAV Cats C/D and Circling Cats C/D visibility ¼ SM.

MISSED APPROACH: Climb to 2000 direct DOCAV and right turn on track 053° to WARER then climb to 3000 on track 053° to SOLDO and hold.

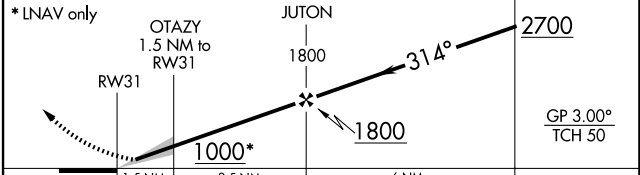
AWOS-3PT 118.975	LONE STAR APP CON 125.2 343.65	UNICOM 122.7 (CTAF) 0
----------------------------	--	---------------------------------



ELEV 501	TDZE 487
----------	----------



2000	DOCAV	WARER	3000	SOLDO
↑	✧	tr 053°	↑	△



CATEGORY	A	B	C	D
LPV DA	687-¾ 200 (200-¾)			
LNAV/VNAV DA	925-1½ 438 (500-1½)			
LNAV MDA	880-1 393 (400-1)			880-1¼ 393 (400-1¼)
CIRCLING	980-1 479 (500-1)	1020-1 519 (600-1)	1300-2¼ 799 (800-2¼)	1300-2½ 799 (800-2½)

SC-2, 16 APR 2026 to 14 MAY 2026

SC-2, 16 APR 2026 to 14 MAY 2026