

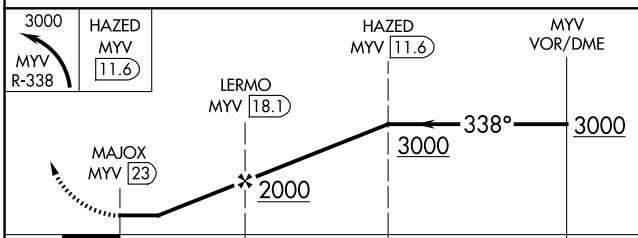
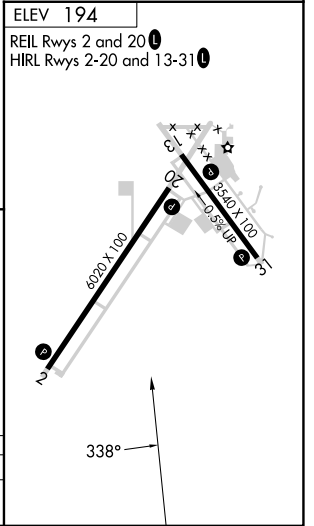
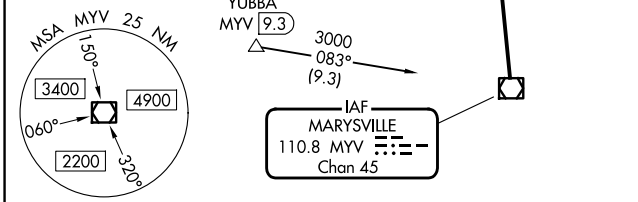
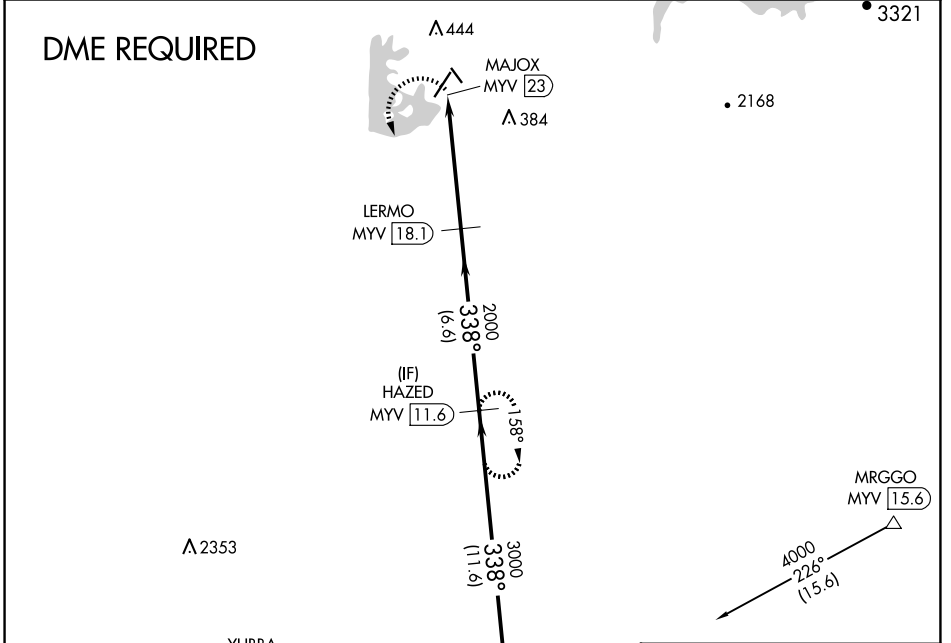
VOR/DME MYV 110.8 Chan 45	APP CRS 338°	Rwy Ldg TDZE Apt Elev N/A N/A 194
---	------------------------	--

VOR-A
OROVILLE MUNI (OVE)

▼ Circling NA northeast of Rwy 13-31. DME required.

MISSED APPROACH: Climbing left turn to 3000 on MYV VOR/DME R-338 to HAZED/MYV 11.6 DME and hold.

ASOS 121.425	NORCAL APP CON 125.4 259.1	UNICOM 122.8 (CTAF) 0
------------------------	--------------------------------------	---------------------------------



CATEGORY	A	B	C	D
CIRCLING	840-1	646 (700-1)	840-1¾ 646 (700-1¾)	840-2 646 (700-2)

SW-2, 16 APR 2026 to 14 MAY 2026

SW-2, 16 APR 2026 to 14 MAY 2026