

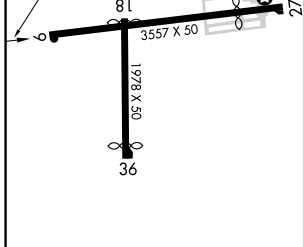
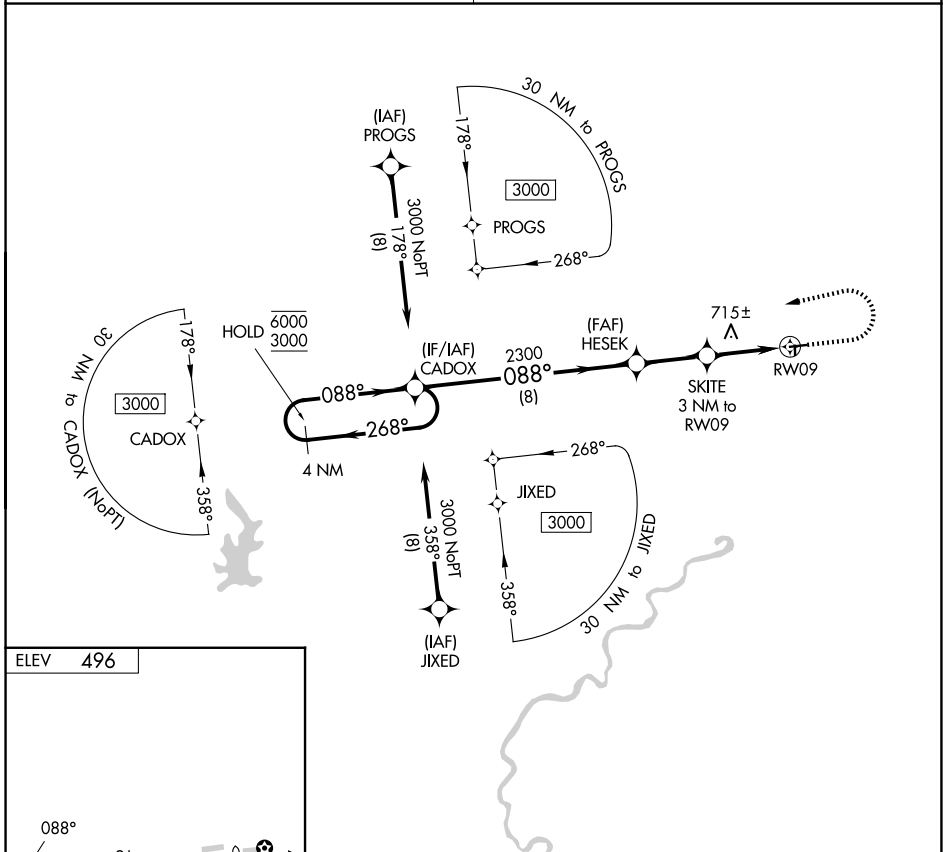
APP CRS	Rwy Ldg	N/A
<b>088°</b>	TDZE	N/A
	Apt Elev	<b>496</b>

# RNAV (GPS)-A

SKY KING (3I3)

RNP APCH.	Procedure NA at night. Use Terre Haute altimeter setting; when not received, use Paris altimeter setting and increase all MDA 40 feet.	MISSED APPROACH: Climb to 1400 then climbing left turn to 3000 direct CADOX and hold.
-----------	--	---

HULMAN APP CON <b>125.45 339.8</b>	UNICOM <b>122.8</b> (CTAF) <b>0</b>
---------------------------------------	--



4 NM Holding Pattern CADOX 6000 ← 268° 3000 → 088°	HESEK 2300 1480 3.00° TCH 40	1400	3000	CADOX
		SKITE 3 NM to RW09	RW09	
CATEGORY A	B	C	D	NA
CIRCLING 1000-1 504 (600-1)	1340-1¼ 844 (900-1¼)	NA		