

WAAS CH <b>90422</b> <b>W10A</b>	APP CRS <b>099°</b>	Rwy Ldg TDZE <b>153</b> Apt Elev <b>153</b>	<b>3750</b>
--	------------------------	---	-------------

# RNAV (GPS) RWY 10

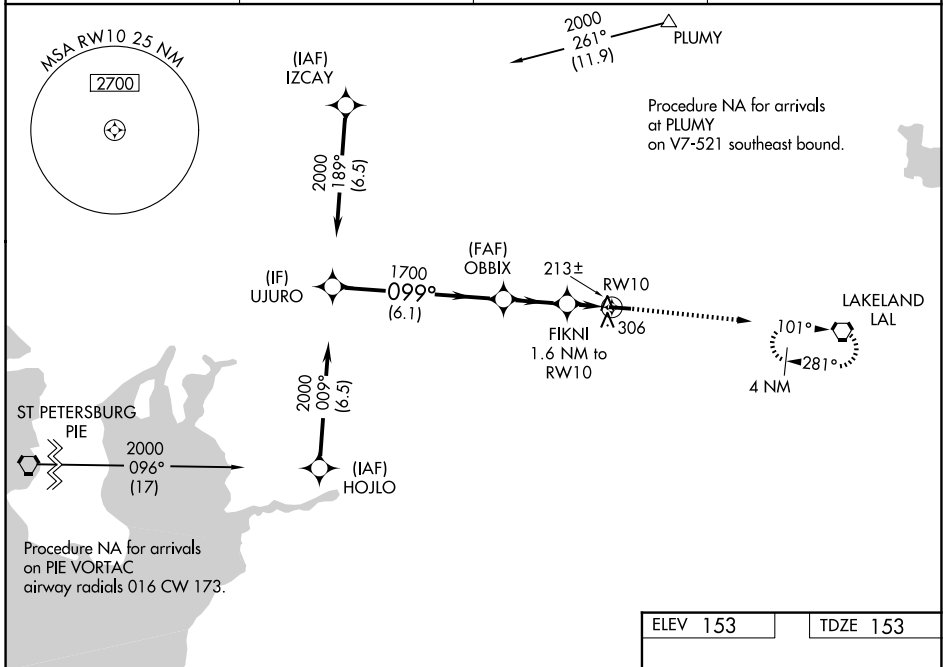
PLANT CITY (PCM)

RNP APCH.

**⚠** Circling Rwy 28 NA at night. Baro-VNAV and VDP NA when using Lakeland altimeter setting. Rwy 10 helicopter visibility reduction below  $\frac{3}{4}$  SM NA. For uncompensated Baro-VNAV systems, LNAV/VNAV NA below -15°C or above 54°C. When local altimeter setting not received, use Lakeland altimeter setting and increase all DA/MDA 20 feet.

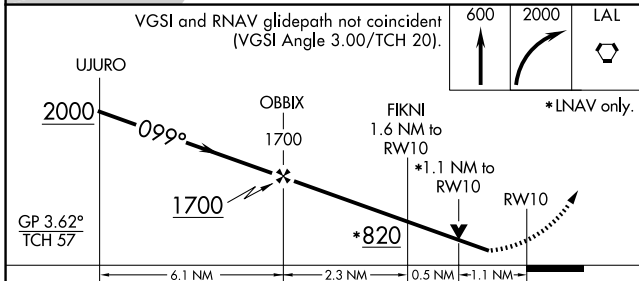
**MISSED APPROACH:** Climb to 600 then climbing right turn to 2000 direct LAL VORTAC and hold.

AWOS-3 <b>120.025</b>	TAMPA APP CON <b>120.65 290.3</b>	CLNC DEL <b>121.725 (GCO)</b>	UNICOM <b>123.05 (CTAF) ①</b>
--------------------------	--------------------------------------	----------------------------------	----------------------------------

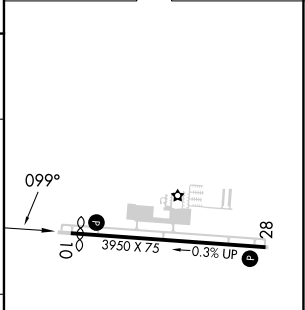


SE-3, 16 APR 2026 to 14 MAY 2026

SE-3, 16 APR 2026 to 14 MAY 2026



ELEV 153	TDZE 153
----------	----------



CATEGORY	A	B	C	D
LPV DA	455-1	302 (400-1)		NA
LNAV/VNAV DA	510-1	357 (400-1)		NA
LNAV MDA	520-1	367 (400-1)		NA
CIRCLING	680-1 527 (600-1)	720-1 567 (600-1)		NA

MIRL Rwy 10-28 ①  
REIL Rwy 10 and 28 ①