

FEALX TWO DEPARTURE (RNAV)

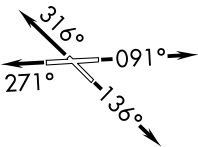
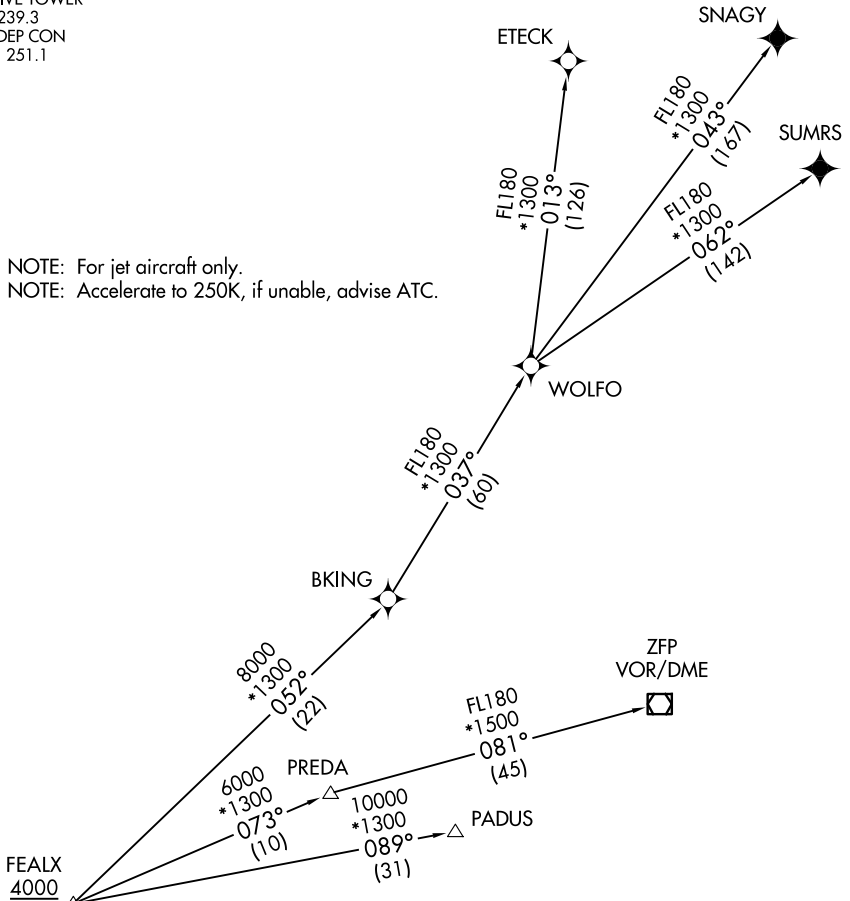
ATIS
119.85
CLINC DEL
127.95
GND CON
121.75
EXECUTIVE TOWER
120.9 239.3
MIAMI DEP CON
126.05 251.1

**TOP ALTITUDE:
ASSIGNED BY ATC**

RNAV 1 - DME/DME/IRU or GPS.
From WOLFO to SNAGY, SUMRS - GPS.

RADAR required.

NOTE: For jet aircraft only.
NOTE: Accelerate to 250K, if unable, advise ATC.



TAKEOFF MINIMUMS

Rwys 9, 13, 31: Standard

Rwy 27: Standard with minimum climb of 500' per NM to 520.

(NARRATIVE ON FOLLOWING PAGE)

NOTE: Chart not to scale.

SE-3, 16 APR 2026 to 14 MAY 2026

SE-3, 16 APR 2026 to 14 MAY 2026

FEALX TWO DEPARTURE (RNAV)

(FEALX2.FEALX) 19MAY22

FEALX TWO DEPARTURE (RNAV)



DEPARTURE ROUTE DESCRIPTION

TAKEOFF RUNWAY 9: Climb on heading 091° or as assigned by ATC for vectors to cross FEALX at or above 4000, thence. . .

TAKEOFF RUNWAY 13: Climb on heading 136° or as assigned by ATC for vectors to cross FEALX at or above 4000, thence. . .

TAKEOFF RUNWAY 27: Climb on heading 271° or as assigned by ATC for vectors to cross FEALX at or above 4000, thence. . .

TAKEOFF RUNWAY 31: Climb on heading 316° or as assigned by ATC for vectors to cross FEALX at or above 4000, thence. . .

. . .(transition). Maintain ATC assigned altitude. Expect clearance to filed altitude ten minutes after departure.

ETECK TRANSITION (FEALX2.ETECK)

FREEPORT TRANSITION (FEALX2.ZFP)

PADUS TRANSITION (FEALX2.PADUS)

SNAGY TRANSITION (FEALX2.SNAGY)

SUMRS TRANSITION (FEALX2.SUMRS)

WOLFO TRANSITION (FEALX2.WOLFO)

SE-3, 16 APR 2026 to 14 MAY 2026

SE-3, 16 APR 2026 to 14 MAY 2026