

(FRSBE2.FRSBE) 23110

AL-5942 (FAA)

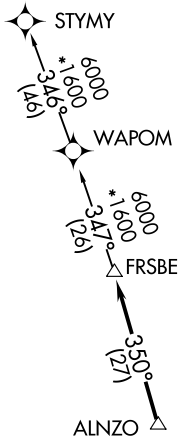
FORT LAUDERDALE EXEC (FXE)
FORT LAUDERDALE, FLORIDA

FRSBE TWO DEPARTURE (RNAV)

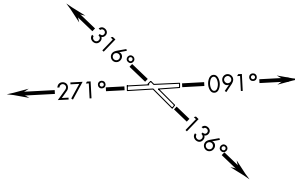
**TOP ALTITUDE:
ASSIGNED BY ATC**

RNAV 1-DME/DME IRU or GPS.
RADAR required.

ATIS
119.85
CLNC DEL
127.95
GND CON
121.75
EXECUTIVE TOWER
120.9 239.3
MIAMI DEP CON
126.05 251.1



TAKEOFF MINIMUMS
Rwys 9, 13, 31: Standard.
Rwy 27: Standard with minimum
climb of 227' per NM to 600.



- NOTE: Jet aircraft only.
- NOTE: Accelerate to 250K, if unable, advise ATC.
- NOTE: WAPOM Transition for KMCO, KDAB, and KMLB area arrivals.

NOTE: Chart not to scale.

DEPARTURE ROUTE DESCRIPTION

TAKEOFF RUNWAY 9: Climb on heading 091° or as assigned by ATC for RADAR vectors to ALNZO, thence...

TAKEOFF RUNWAY 13: Climb on heading 136° or as assigned by ATC for RADAR vectors to ALNZO, thence...

TAKEOFF RUNWAY 27: Climb on heading 271° or as assigned by ATC for RADAR vectors to ALNZO, thence...

TAKEOFF RUNWAY 31: Climb on heading 316° or as assigned by ATC for RADAR vectors to ALNZO, thence...

... on track 350° to FRSBE, then on (transition). Maintatin ATC assigned altitude, expect filed altitude 10 minutes after departure.

STYMY TRANSITION (FRSBE2.STYMY)
WAPOM TRANSITION (FRSBE2.WAPOM)

FRSBE TWO DEPARTURE (RNAV)
(FRSBE2.FRSBE) 20APR23

FORT LAUDERDALE, FLORIDA
FORT LAUDERDALE EXEC (FXE)

SE-3, 16 APR 2026 to 14 MAY 2026

SE-3, 16 APR 2026 to 14 MAY 2026