

GABOW TWO DEPARTURE (RNAV)

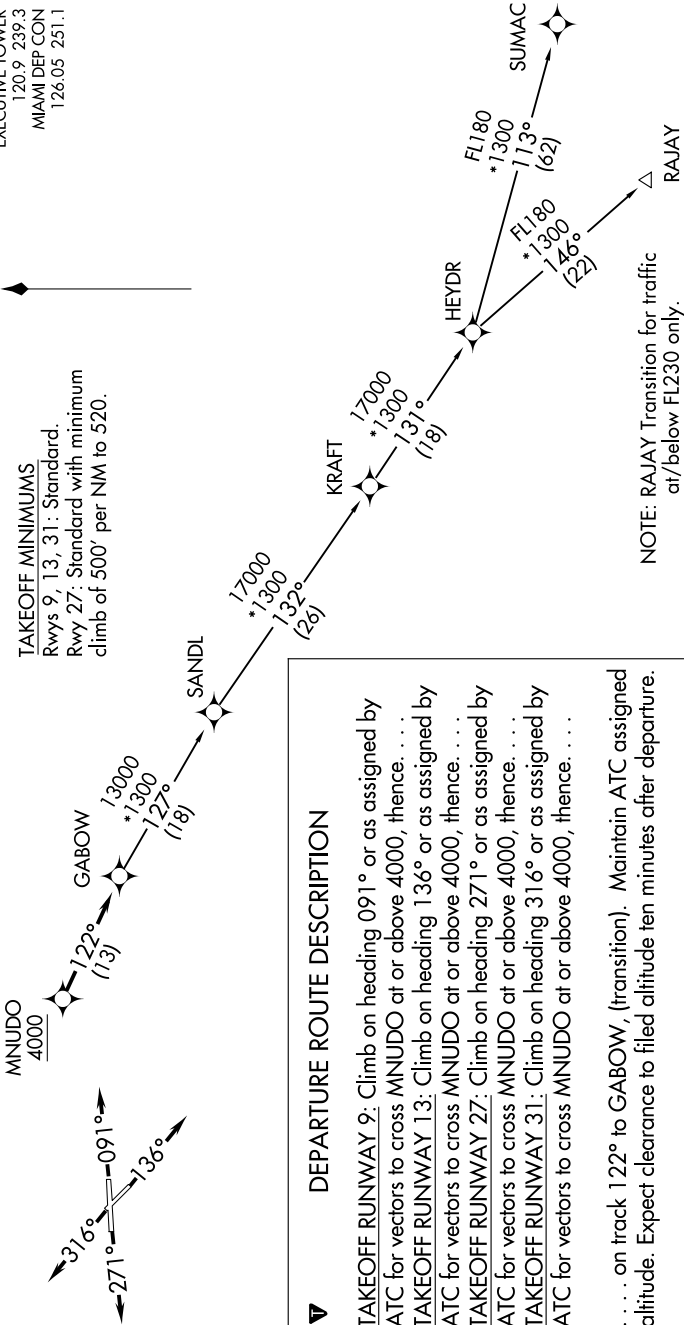
SE-3, 16 APR 2026 to 14 MAY 2026

ATIS
119.85
CINCDEL
127.95
GND CON
121.75
EXECUTIVE TOWER
120.9 239.3
MIAMI DEP CON
126.05 251.1



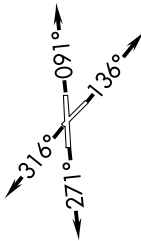
TAKEOFF MINIMUMS
Rwys 9, 13, 31: Standard.
Rwy 27: Standard with minimum
climb of 500' per NM to 520.

RNAV 1 - DME/DME/IRU or GPS.
From KRAFT - GPS.
RADAR required.



NOTE: Chart not to scale.

**TOP ALTITUDE:
ASSIGNED BY ATC**



DEPARTURE ROUTE DESCRIPTION

TAKEOFF RUNWAY 9: Climb on heading 091° or as assigned by ATC for vectors to cross MNUDO at or above 4000, thence. . . .

TAKEOFF RUNWAY 13: Climb on heading 136° or as assigned by ATC for vectors to cross MNUDO at or above 4000, thence. . . .

TAKEOFF RUNWAY 27: Climb on heading 271° or as assigned by ATC for vectors to cross MNUDO at or above 4000, thence. . . .

TAKEOFF RUNWAY 31: Climb on heading 316° or as assigned by ATC for vectors to cross MNUDO at or above 4000, thence. . . .

. . . . on track 122° to GABOW, (transition). Maintain ATC assigned altitude. Expect clearance to filed altitude ten minutes after departure.

RAJAY TRANSITION (GABOW2.RAJAY)
SANDL TRANSITION (GABOW2.SANDL)
SUMAC TRANSITION (GABOW2.SUMAC)

SE-3, 16 APR 2026 to 14 MAY 2026