

RNAV 1-DME/DME/IRU or GPS.  
RADAR required.

**TOP ALTITUDE:  
ASSIGNED BY ATC**

ATIS 119.85  
CLNC DEL 127.95  
GND CON 121.75  
EXECUTIVE TOWER 120.9 239.3  
MIAMI DEP CON 126.05 251.1

(HROCK2, HROCK) 23110  
HROCK TWO DEPARTURE (RNAV)

AL-5942 (FAA)

FORT LAUDERDALE EXEC (FXXE)  
FORT LAUDERDALE, FLORIDA

NOTE: Chart not to scale.

TAKEOFF MINIMUMS

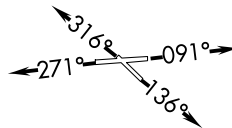
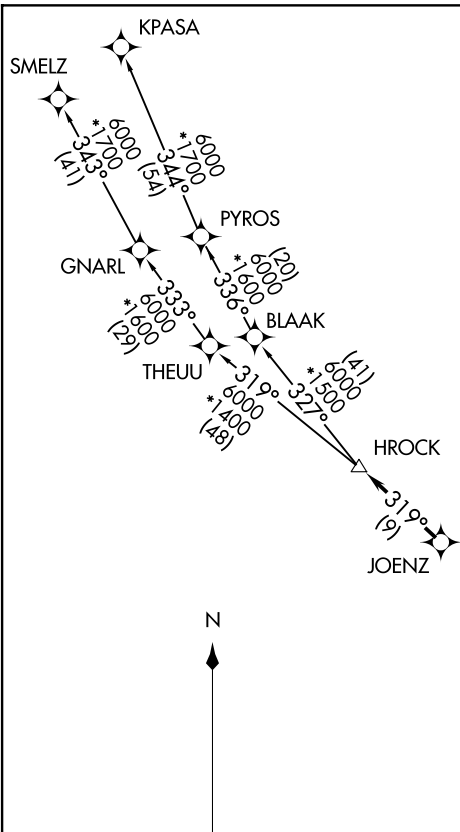
Rwys 9, 13, 31: Standard.

Rwy 27: Standard with minimum climb of 227' per NM to 600.

NOTE: Jet aircraft only.

NOTE: Accelerate to 250K, if unable, advise ATC.

(NARRATIVE ON FOLLOWING PAGE)



HROCK TWO DEPARTURE (RNAV)  
(HROCK2, HROCK) 20APR23

FORT LAUDERDALE, FLORIDA  
FORT LAUDERDALE EXEC (FXXE)

# HROCK TWO DEPARTURE (RNAV)



## DEPARTURE ROUTE DESCRIPTION

TAKEOFF RUNWAY 9: Climb on heading 091° or as assigned for RADAR vectors to cross JOENZ, thence. . . .

TAKEOFF RUNWAY 13: Climb on heading 136° or as assigned for RADAR vectors to cross JOENZ, thence. . . .

TAKEOFF RUNWAY 27: Climb on heading 271° or as assigned for RADAR vectors to cross JOENZ, thence. . . .

TAKEOFF RUNWAY 31: Climb on heading 316° or as assigned for RADAR vectors to cross JOENZ, thence. . . .

. . . .on track 319° to HROCK, then on assigned transition. Maintain ATC assigned altitude, expect filed altitude within 10 minutes after departure.

KPASA TRANSITION (HROCK2.KPASA)

SMELZ TRANSITION (HROCK2.SMELZ)

SE-3, 16 APR 2026 to 14 MAY 2026

SE-3, 16 APR 2026 to 14 MAY 2026