

LOC I-FXE <b>111.1</b>	APP CRS <b>091°</b>	Rwy Ldg <b>6002</b>
		TDZE <b>13</b>
		Apt Elev <b>13</b>

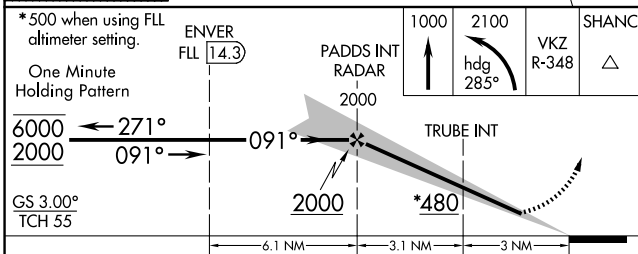
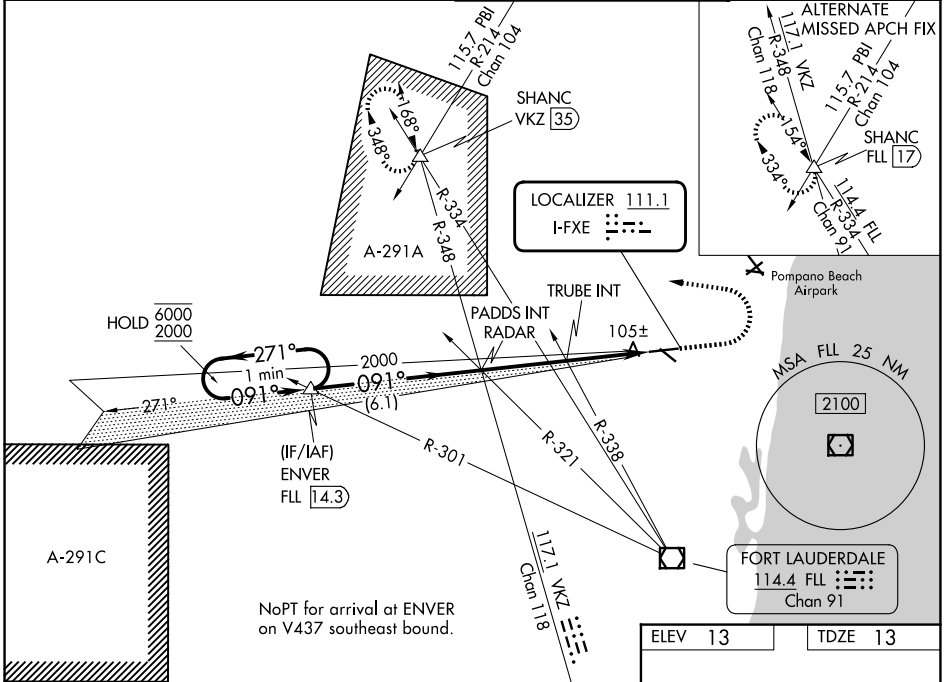
# ILS or LOC RWY 9

## FORT LAUDERDALE EXEC (FXE)

When local altimeter setting not received, use FLL altimeter setting: increase S-ILS 9 DA to 231 feet; increase all MDAs 20 feet.

MALSR MISSED APPROACH: Climb to 1000 then climbing left turn to 2100 on heading 285° and on VKZ VOR/DME R-348 to SHANC INT/VKZ 35 DME and hold.

ATIS <b>119.85</b>	MIAMI APP CON <b>119.7 306.3</b>	EXECUTIVE TOWER <b>120.9 239.3</b>	GND CON <b>121.75</b>
-----------------------	-------------------------------------	---------------------------------------	--------------------------



CATEGORY	A	B	C	D
S-ILS 9	213-½ 200 (200-½)			
S-LOC 9*	480-½ 467 (500-½) 480-1 467 (500-1)			
CIRCLING	520-1 507 (600-1)	620-1 607 (700-1)	780-2¼ 767 (800-2¼)	780-2½ 767 (800-2½)
TRUBE FIX MINIMUMS (DUAL VOR RECEIVERS REQUIRED)				
S-LOC 9	360-½ 347 (400-½)		360-¾ 347 (400-¾)	
CIRCLING	520-1 507 (600-1)	620-1 607 (700-1)	780-2¼ 767 (800-2¼)	780-2½ 767 (800-2½)

ELEV 13	TDZE 13
---------	---------

The diagram shows the location of the Tower (TWR 75) and the frequencies for the Tower (6002 X 100), Tower (4000 X 100), and Tower (51). The diagram also shows the location of the Tower (TWR 75) and the frequencies for the Tower (6002 X 100), Tower (4000 X 100), and Tower (51). The diagram also shows the location of the Tower (TWR 75) and the frequencies for the Tower (6002 X 100), Tower (4000 X 100), and Tower (51).

REIL Rwy 13, 27 and 31	60	90	120	150	180
HIRL Rwy 9-27	6:06	4:04	3:03	2:26	2:02
MIRL Rwy 13-31	FAF to MAP 6.1 NM				

SE-3, 16 APR 2026 to 14 MAY 2026

SE-3, 16 APR 2026 to 14 MAY 2026