

WAAS CH 50319 W27A	APP CRS 271°	Rwy Ldg TDZE 13 Apt Elev 13
--	------------------------	---

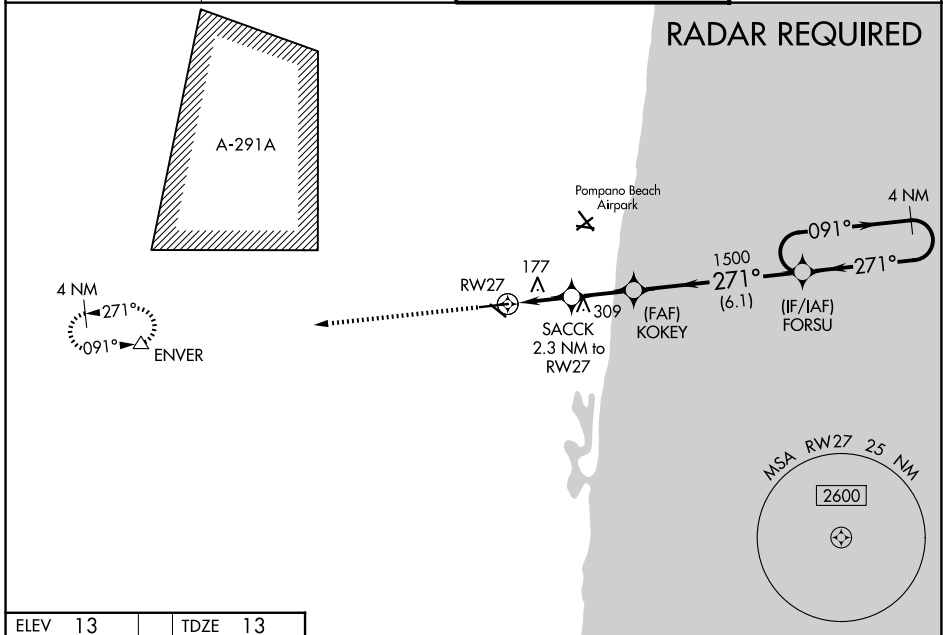
RNAV (GPS) RWY 27

FORT LAUDERDALE EXEC (FXXE)

⚠ For uncompensated Baro-VNAV systems, LNAV/VNAV NA below 4°C (40°F) or above 54°C (130°F).
⚠ DME/DME RNP-0.3 NA. When local altimeter setting not received, use Fort Lauderdale/Hollywood Intl altimeter setting and increase LPV DA to 414; LNAV/VNAV DA to 468. Increase all MDA 20 feet and increase LPV all Cats and LNAV Cats C/D visibility to 1 $\frac{3}{8}$. Baro-VNAV and VDP NA when using Fort Lauderdale/Hollywood Intl altimeter setting. Helicopter visibility reduction below $\frac{3}{4}$ SM NA.

MISSED APPROACH: Climb to 2000 direct ENVER and hold.

ATIS 119.85	MIAMI APP CON 119.7 306.3	EXECUTIVE TOWER 120.9 239.3	GND CON 121.75
-----------------------	-------------------------------------	---------------------------------------	--------------------------



SE-3, 16 APR 2026 to 14 MAY 2026

SE-3, 16 APR 2026 to 14 MAY 2026

ELEV 13	TDZE 13
---------	---------

