

APP CRS	Rwy Ldg	3907
359°	TDZE	512
	Apt Elev	516

RNAV (GPS) RWY 36

COMMERCE MUNI (2F7)

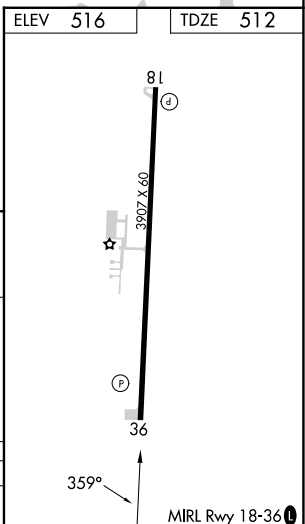
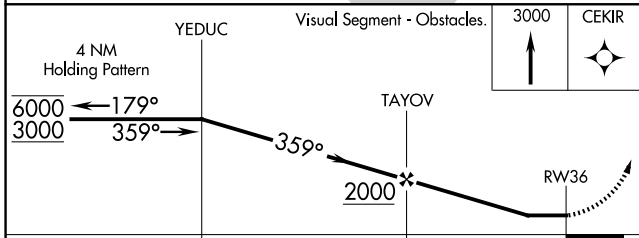
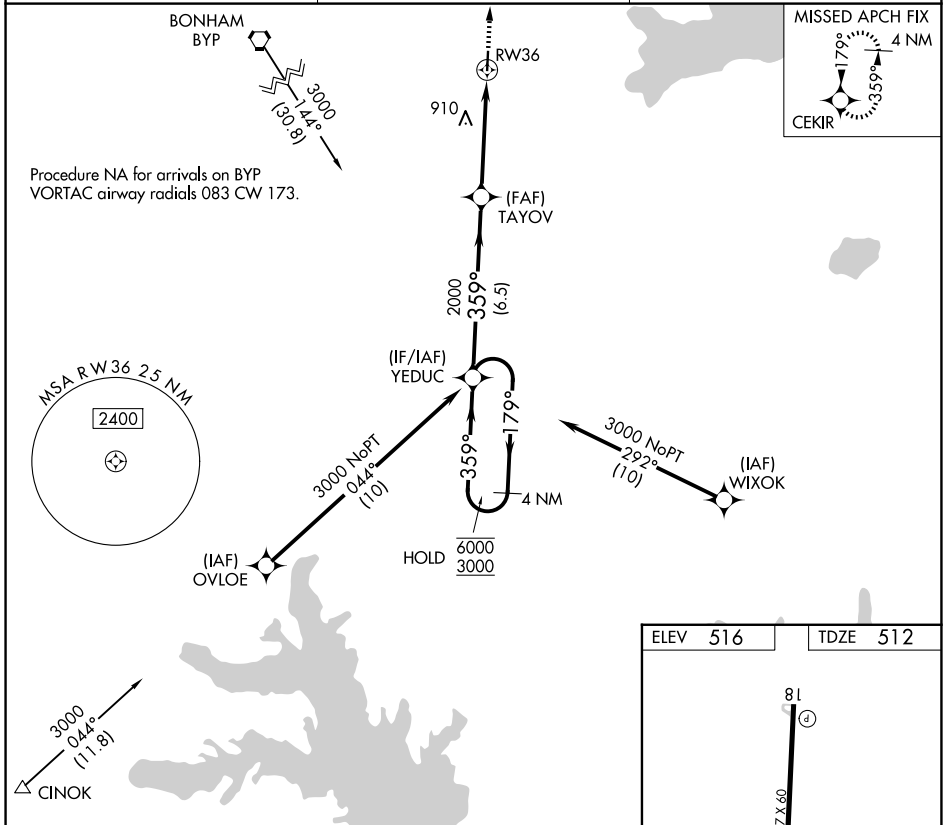
RNP APCH.
 Use Greenville altimeter setting, when not received, use Sulphur Springs altimeter setting and increase all MDAs 20 feet. Rwy 36 helicopter visibility reduction below 3/4 SM NA.

MISSED APPROACH: Climb to 3000 direct CEKIR and hold.

GVT AWOS-3
133.425

FORT WORTH CENTER
132.025 317.75

CTAF
122.9



CATEGORY	A	B	C	D
LNAV MDA	1140-1	628 (700-1)	NA	

SC-2, 16 APR 2026 to 14 MAY 2026

SC-2, 16 APR 2026 to 14 MAY 2026