

# RNAV (GPS) RWY 5

WINTER HAVEN RGNL (GIF')

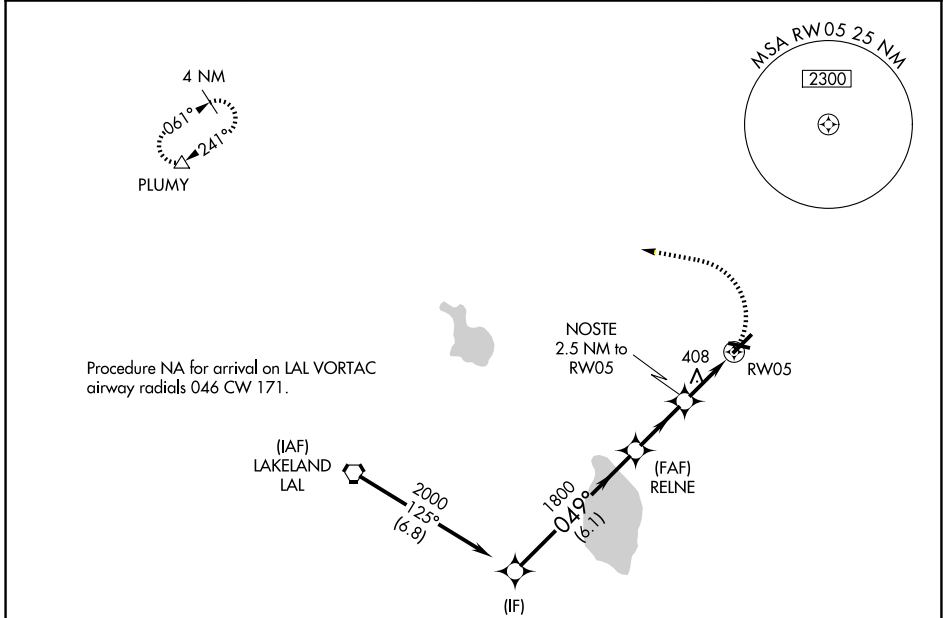
APP CRS	Rwy Ldg	<b>5005</b>
<b>049°</b>	TDZE	<b>146</b>
	Apt Elev	<b>146</b>

RNP APCH-GPS.

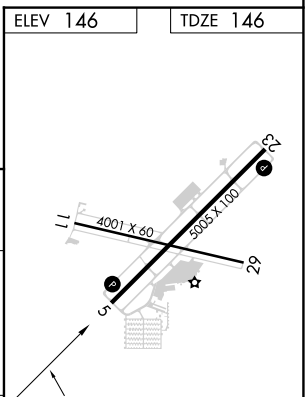
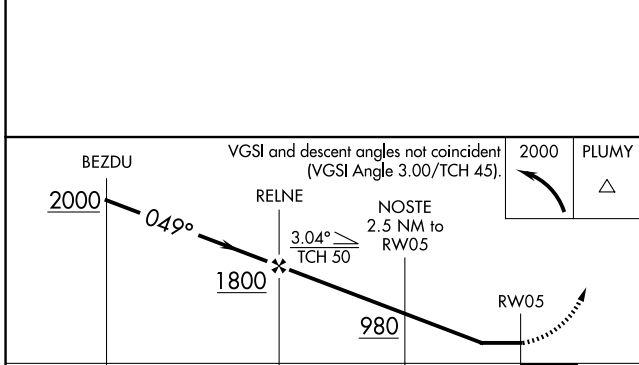
**⚠** Rwy 5 helicopter visibility reduction below 1 SM NA. When local altimeter setting not received, use Bartow altimeter setting and increase all MDAs 20 feet and visibility LNAV Cats C and D 1/2 SM. Straight-in Rwy 5 NA at night, Circling Rwy 5, 11, 29 NA at night.

MISSED APPROACH: Climbing left turn to 2000 direct PLUMY and hold.

ASOS <b>133.675</b>	TAMPA APP CON <b>120.65 290.3</b>	GCO <b>121.725</b>	UNICOM <b>123.05 (CTAF) 0</b>
------------------------	--------------------------------------	-----------------------	----------------------------------



ELEV 146	TDZE 146
----------	----------



CATEGORY	A	B	C	D
LNAV MDA	660-1	514 (600-1)	660-1 <sup>3</sup> / <sub>8</sub>	514 (600-1 <sup>3</sup> / <sub>8</sub> )
CIRCLING	720-1	574 (600-1)	820-2 674 (700-2)	960-2 <sup>3</sup> / <sub>4</sub> 814 (900-2 <sup>3</sup> / <sub>4</sub> )

REIL Rwy 5 and 23  
REIL Rwy 11 and 29 **0**  
MIRL Rwy 5-23 and 11-29 **0**

SE-3, 16 APR 2026 to 14 MAY 2026

SE-3, 16 APR 2026 to 14 MAY 2026