

WAAS CH 93818 W17A	APP CRS 174°	Rwy Ldg TDZE Apt Elev	5000 657 657
--	------------------------	-----------------------------	---

RNAV (GPS) RWY 17

CHESTER CATAWBA RGNL (DCM)

RNP APCH-GPS.

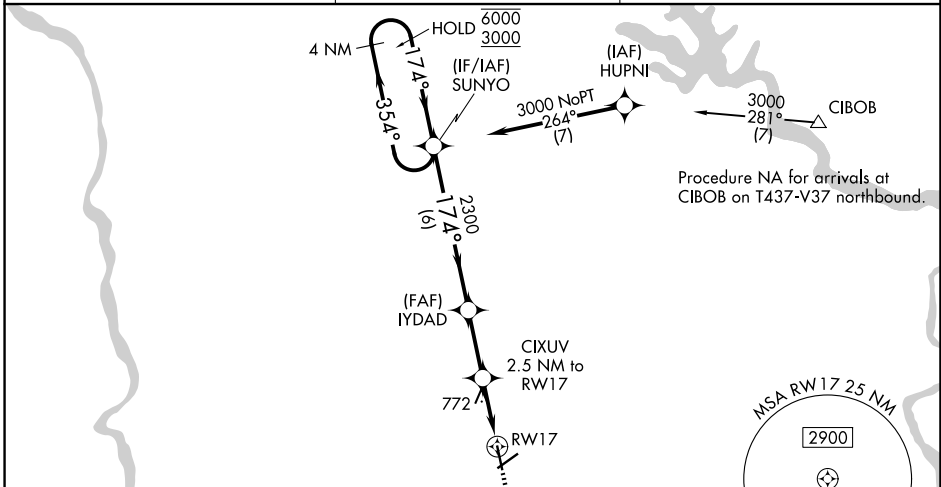
⚠ For uncompensated Baro-VNAV systems, LNAV/VNAV NA below -16°C or above 54°C.
⚠ Circling to Rwy 5-23 NA at night. Rwy 17 helicopter visibility reduction below ¼ SM NA.
 Baro-VNAV and VDP NA when using UZA altimeter setting. When local altimeter setting not received, use UZA altimeter setting and increase LPV DA to 940 feet and all visibilities ½ SM. Increase LNAV/VNAV DA to 1167 feet; increase all MDAs 40 feet and LNAV visibility Cat C/D ¼ SM.

MISSED APPROACH:
 Climb to 3000 direct HUSNY and hold.

AWOS-3
120.975

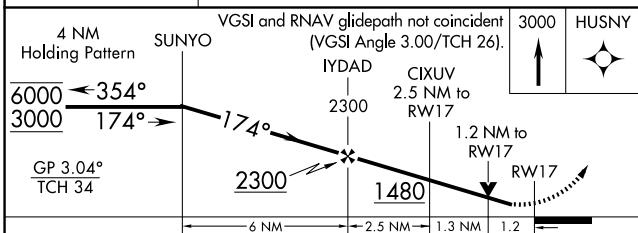
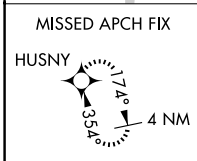
CHARLOTTE APP CON
120.05 307.8

UNICOM
122.7 (CTAF) 0



SE-2, 16 APR 2026 to 14 MAY 2026

SE-2, 16 APR 2026 to 14 MAY 2026



CATEGORY	A	B	C	D
LPV DA		907-¾	250 (300-¾)	
LNAV/VNAV DA		1134-1⅜	477 (500-1⅜)	
LNAV MDA	1060-1	403 (500-1)	1060-1⅛	403 (500-1⅛)
CIRCLING	1160-1	503 (600-1)	1280-1¾ 623 (700-1¾)	1480-2¾ 823 (900-2¾)

