

VOR CGG 109.8	APP CRS 128°	Rwy Ldg TDZE Apt Elev	5005 1154 1158
-------------------------	------------------------	-----------------------------	---

VOR RWY 14

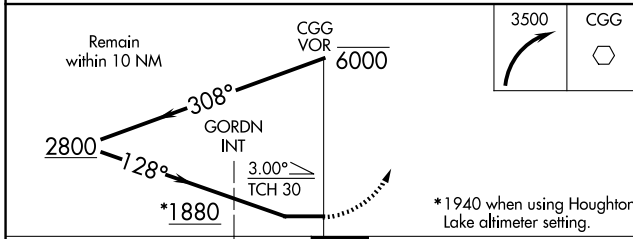
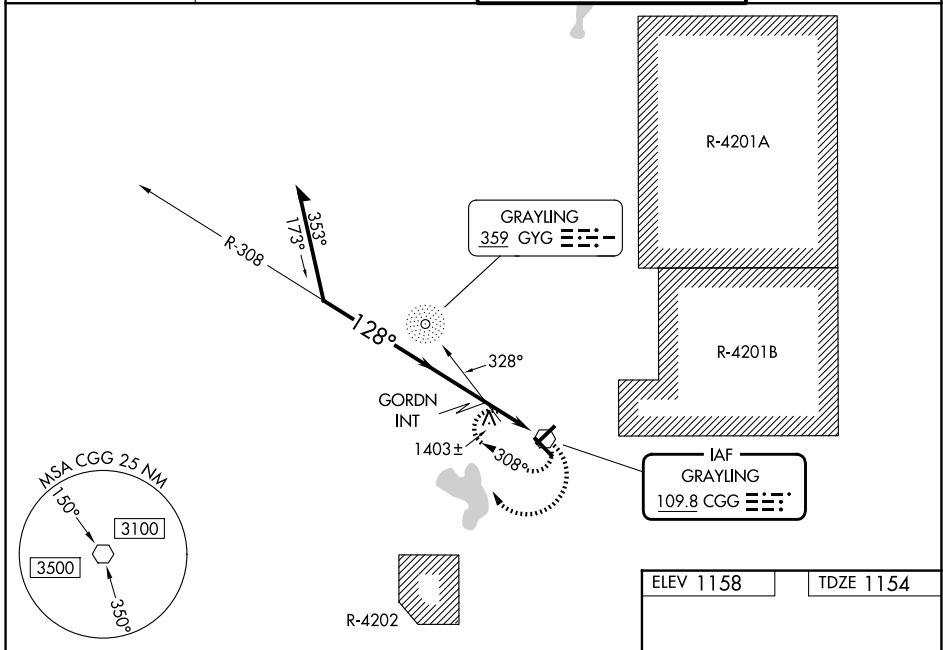
GRAYLING AAF (GOV)

RADAR required for procedure entry.

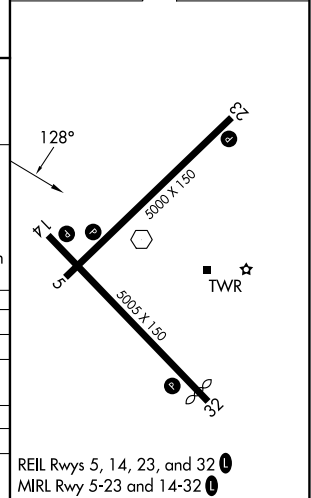
NA Circling Rwy 5, 23, 32 NA at night. Rwy 14 helicopter visibility reduction below ¾ SM NA. When local altimeter setting not received, use Houghton Lake altimeter setting: increase all MDAs 60 feet and S-14 visibility Cat B ¼ SM, Cats C and D ½ SM and Circling Cat B ¼ SM, Cat C ½ SM, Cat D ¼ SM and GORDN fix minimums: S-14 Cats C and D ¼ SM and Circling Cat C and D visibility ¼ SM.

MISSED APPROACH: Climbing right turn to 3500 in CGG VOR holding pattern.

ATIS 119.075	MINNEAPOLIS CENTER 125.475 269.45	GRAYLING TOWER ★ 124.65 (CTAF) 0	GND CON 121.9
------------------------	---	--	-------------------------



ELEV 1158	TDZE 1154
-----------	-----------



CATEGORY	A	B	C	D
S-14	1880-1	726 (800-1)	1880-2	726 (800-2)
CIRCLING	1880-1	722 (800-1)	1880-2	1960-2½
			722 (800-2)	802 (900-2½)
GORDN FIX MINIMUMS (ADF REQUIRED)				
S-14	1660-1	506 (600-1)	1660-1¾	506 (600-1¾)
CIRCLING	1660-1	1720-1	1800-1¾	1960-2½
	502 (600-1)	562 (600-1)	642 (700-1¾)	802 (900-2½)

REIL Rwys 5, 14, 23, and 32 0
MIRL Rwy 5-23 and 14-32 0

EC-1, 16 APR 2026 to 14 MAY 2026

EC-1, 16 APR 2026 to 14 MAY 2026