

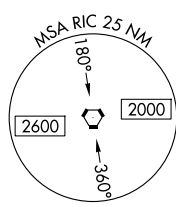
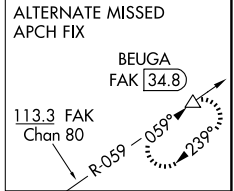
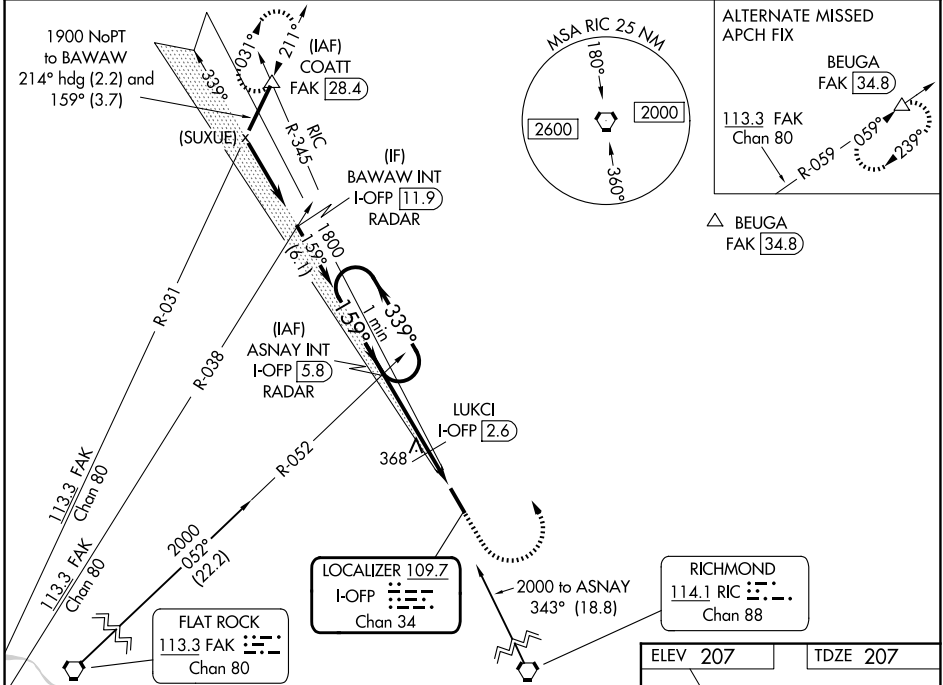
LOC/DME I-OPP 109.7 Chan 34	APP CRS 159°	Rwy Ldg TDZE 207 Apt Elev 207	5402
---	------------------------	---	-------------

LOC RWY 16
HANOVER COUNTY MUNI (OFP)

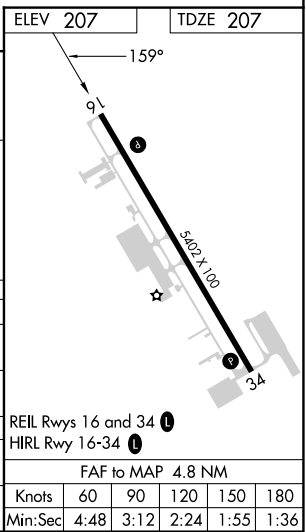
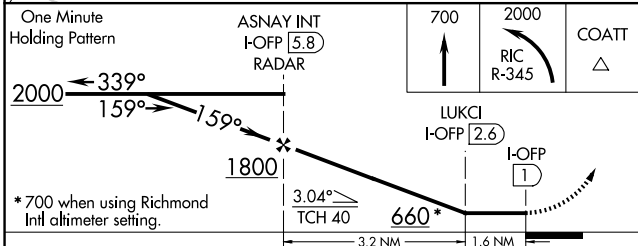
▼ Helicopter visibility reduction below 3/4 SM NA. When local altimeter setting not received, use Richmond Intl altimeter setting and increase all MDAs 40 feet; increase LUKCI fix minimums S-16 Cat C visibility 1/8 SM.

MISSED APPROACH: Climb to 700 then climbing left turn to 2000 via RIC VORTAC R-345 to COATT INT and hold.

ASOS 119.025	POTOMAC APP CON (001°-185°) 126.4 307.2 (186°-360°) 126.75 307.2	CLNC DEL 125.4	UNICOM 122.7 (CTAF)
------------------------	--	--------------------------	-------------------------------



△ BEUGA FAK [34.8]



CATEGORY	A	B	C	D
S-16	660-1	453 (500-1)	660-1 3/8 453 (500-1 3/8)	660-1 1/2 453 (500-1 1/2)
CIRCLING	660-1	453 (500-1)	900-2 693 (700-2)	1020-2 3/4 813 (900-2 3/4)
LUKCI FIX MINIMUMS				
S-16	560-1 353 (400-1)		560-1 1/4 353 (400-1 1/4)	
CIRCLING	660-1	453 (500-1)	900-2 693 (700-2)	1020-2 3/4 813 (900-2 3/4)

REIL Rwy 16 and 34 **Ⓛ**
HIRL Rwy 16-34 **Ⓛ**

FAF to MAP 4.8 NM

Knots	60	90	120	150	180
Min:Sec	4:48	3:12	2:24	1:55	1:36

NE-3, 16 APR 2026 to 14 MAY 2026

NE-3, 16 APR 2026 to 14 MAY 2026