

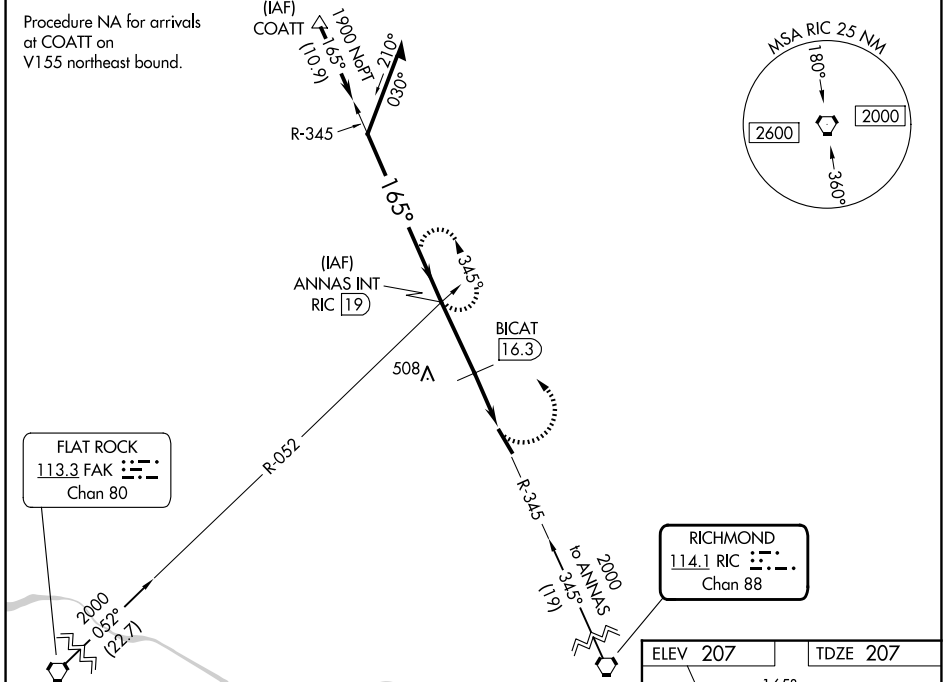
VORTAC RIC 114.1 Chan 88	APP CRS 165°	Rwy Ldg TDZE Apt Elev	5402 207 207
---------------------------------------	------------------------	-----------------------------	---

VOR RWY 16
HANOVER COUNTY MUNI (OFP)

⚠ When local altimeter setting not received, use Richmond Intl altimeter setting and increase all MDA 40 feet. Rwy 16 helicopter visibility reduction below 3/4 SM NA.

⚠ MISSED APPROACH: Climbing left turn to 2000 via RIC R-345 to ANNAS INT/19 DME and hold.

ASOS 119.025	POTOMAC APP CON (001°-185°) 126.4 307.2 (186°-360°) 126.75 307.2	CLNC DEL 125.4	UNICOM 122.7 (CTAF) 📞
------------------------	--	--------------------------	--

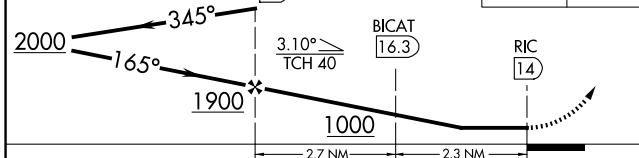


Remain within 10 NM

VGSI and descent angles not coincident (VGSI Angle 3.00/TCH 40).

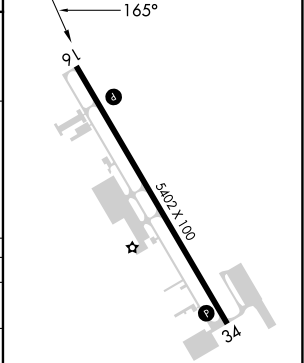
ANNAS INT RIC 19

2000 RIC R-345 ANNAS INT



CATEGORY	A	B	C	D
S-16	1000-1 793 (800-1)	1000-1¼ 793 (800-1¼)	1000-2¼ 793 (800-2¼)	1000-2½ 793 (800-2½)
CIRCLING	1000-1 793 (800-1)	1000-1¼ 793 (800-1¼)	1000-2¼ 793 (800-2¼)	1020-2¾ 813 (900-2¾)
BICAT FIX MINIMUMS (DME REQUIRED)				
S-16	820-1	613 (700-1)	820-1¾	613 (700-1¾)
CIRCLING	820-1	613 (700-1)	900-2 693 (700-2)	1020-2¾ 813 (900-2¾)

ELEV 207	TDZE 207
----------	----------



REIL Rwy 16 and 34 **📞**
HIRL Rwy 16-34 **📞**

FAF to MAP 5 NM

Knots	60	90	120	150	180
Min:Sec	5:00	3:20	2:30	2:00	1:40

NE-3, 16 APR 2026 to 14 MAY 2026

NE-3, 16 APR 2026 to 14 MAY 2026