

LOC/DME I-RLD	APP CRS	Rwy Ldg	4009
110.5	189°	TDZE	390
Chan 42		Apt Elev	394

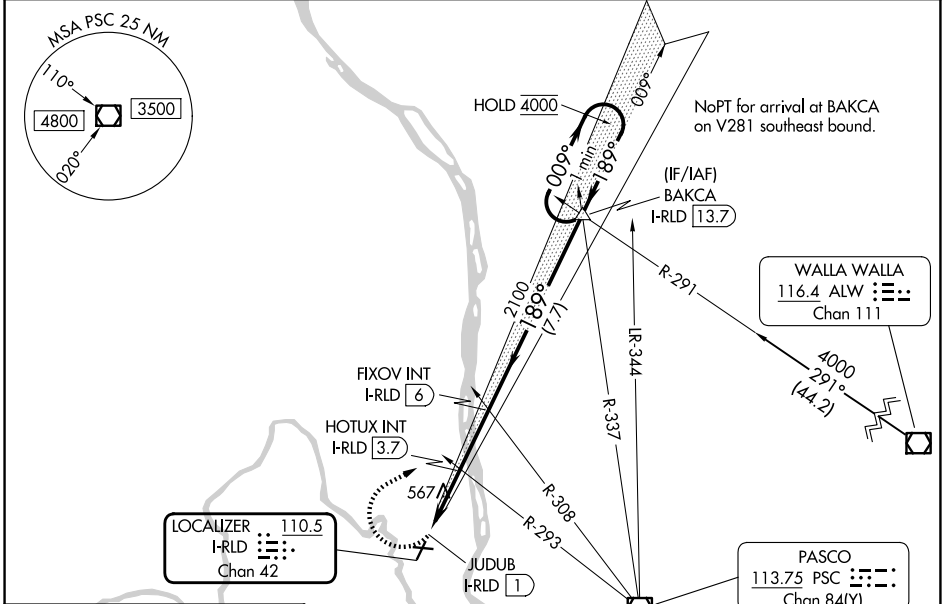
LOC RWY 19

RICHLAND (R.LD)

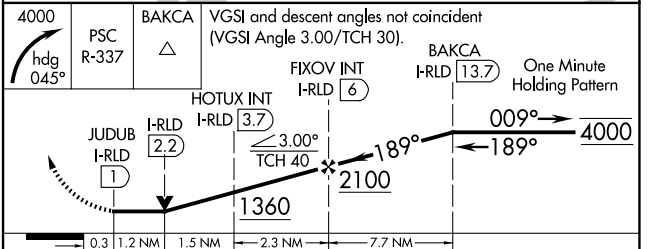
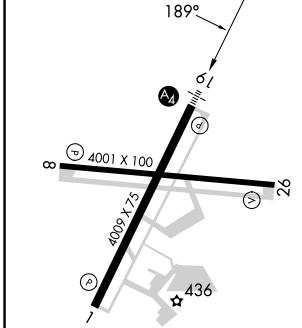
VDP NA when using PSC altimeter setting. For inop ALS, increase S-19 Cats C and D visibility to 3 SM. When local altimeter setting not received, use PSC altimeter setting and increase all MDAs 20 feet and increase HOTUX fix minimums S-LOC 19 visibility Cat C/D 1/2 SM, and Circling visibility Cat C 1/2 SM. HOTUX fix minimum: For inop ALS, increase S-19 Cats C and D visibility to 1 1/2 SM.

MALS MISSED APPROACH: Climbing right turn to 4000 on heading 045° and on PSC VOR/DME R-337 to BAKCA INT/I-RLD 13.7 DME and hold, continue climb-in-hold to 4000.

AWOS-3PT 132.675	SPOKANE APP CON ★ 128.75 377.2	CLNC DEL 122.4	UNICOM 122.7 (CTAF) 0
----------------------------	------------------------------------------	--------------------------	---------------------------------



ELEV 394	TDZE 390
----------	----------



CATEGORY	A	B	C	D
S-19	1360-1 970 (1000-1)	1360-1 1/4 970 (1000-1 1/4)	1360-2 1/2 970 (1000-2 1/2)	970 (1000-2 1/2)
CIRCLING	1360-1 1/4 966 (1000-1 1/4)	1360-1 1/2 966 (1000-1 1/2)	1360-3 966 (1000-3)	1960-3 1566 (1600-3)
HOTUX FIX MINIMUMS (DUAL VOR RECEIVERS OR DME REQUIRED)				
S-19	880-7/8 490 (500-7/8)		880-1 1/8 490 (500-1 1/8)	
CIRCLING	880-1 486 (500-1)	1000-1 606 (700-1)	1200-2 1/4 806 (900-2 1/4)	1960-3 1566 (1600-3)

REIL Rwy 1 and 19
MIRL Rwy 1-19 and 8-26
FAF to MAP 5 NM

Knots	60	90	120	150	180
Min:Sec	5:00	3:20	2:30	2:00	1:40

NW-1, 16 APR 2026 to 14 MAY 2026

NW-1, 16 APR 2026 to 14 MAY 2026