

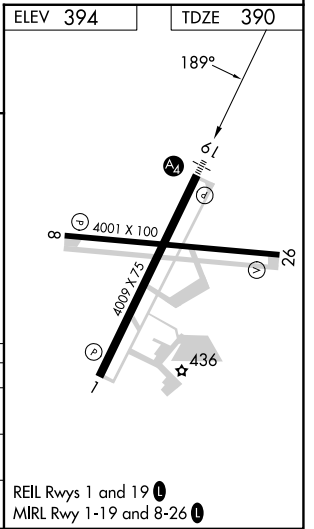
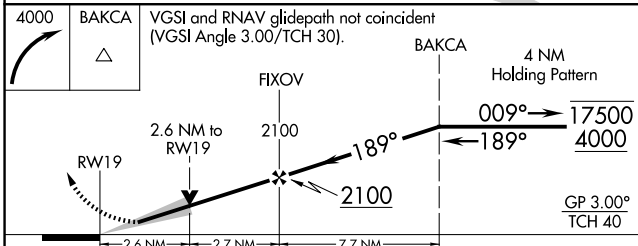
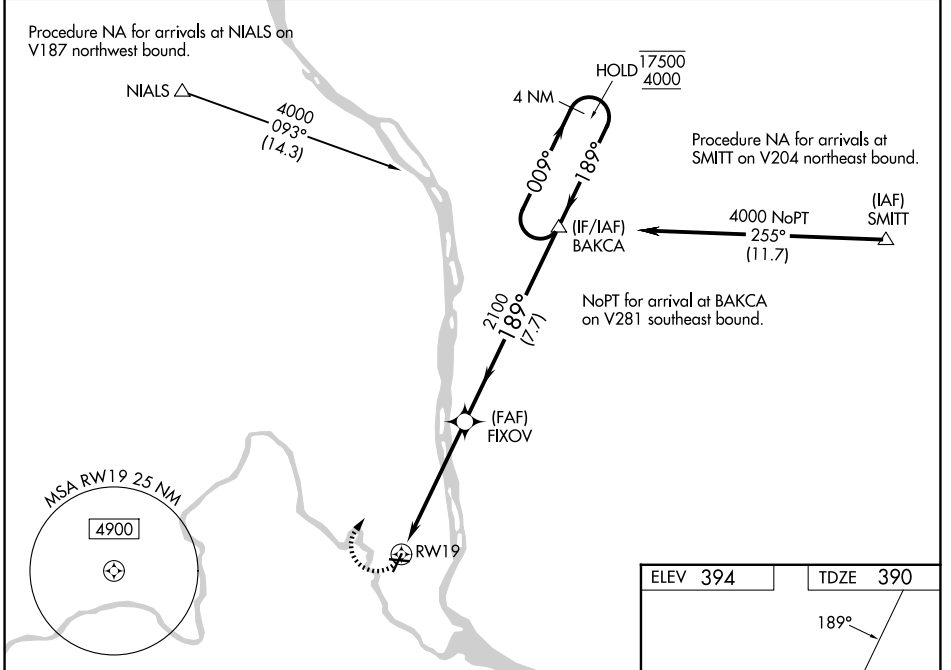
APP CRS	Rwy Ldg	4009
189°	TDZE	390
	Apt Elev	394

RNAV (GPS) Y RWY 19

RICHLAND (R.LD)

RNP APCH - GPS.	MALS 	MISSED APPROACH: Climbing right turn 4000 direct BAKCA and hold, continue climb-in-hold to 4000.
For uncompensated Baro-VNAV systems, LNAV/VNAV NA below -12°C or above 54°C. Baro-VNAV and VDP NA when using PSC altimeter setting. When local altimeter setting not received, use PSC altimeter setting and increase LNAV/VNAV DA to 814 feet; increase all MDAs 20 feet and LNAV visibility Cat C/D 1/2 SM. For inop ALS increase LNAV/VNAV visibility all Cats to 1 1/2 and LNAV Cat C and D visibility to 2 1/2 SM.		

AWOS-3PT 132.675	SPOKANE APP CON * 128.75 377.2	CLNC DEL 122.4	UNICOM 122.7 (CTAF)
----------------------------	--	--------------------------	-------------------------------



CATEGORY	A	B	C	D
LNAV/VNAV DA	794-1 404 (400-1)			
LNAV MDA	1240-7/8 850 (900-7/8)	1240-1 850 (900-1)	1240-2	850 (900-2)
CIRCLING	1240-1 1/4	846 (900-1 1/4)	1240-2 1/2 846 (900-2 1/2)	1960-3 1566 (1600-3)

NW-1, 16 APR 2026 to 14 MAY 2026

NW-1, 16 APR 2026 to 14 MAY 2026