

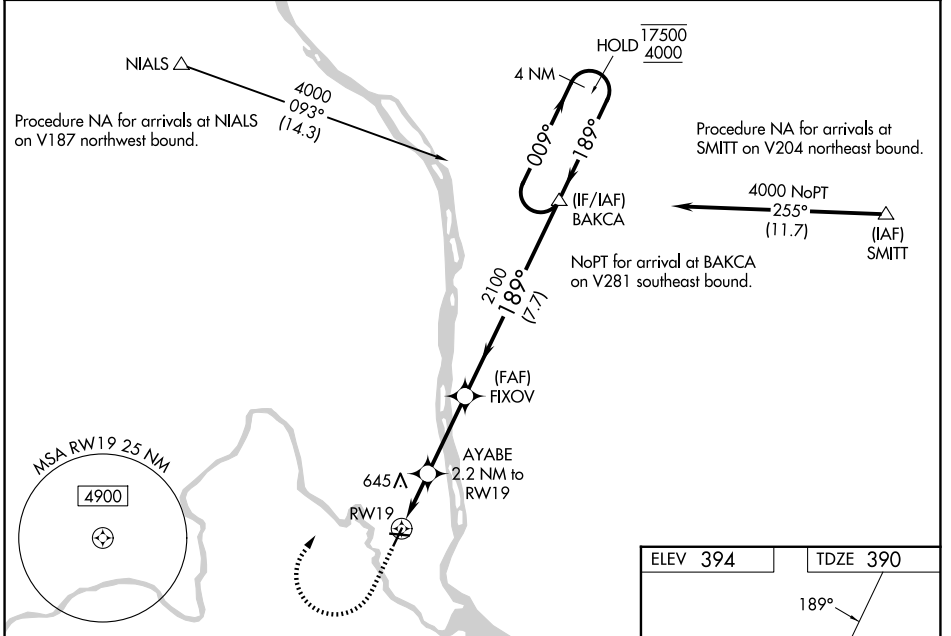
APP CRS	Rwy Ldg	4009
189°	TDZE	390
	Apt Elev	394

RNAV (GPS) Z RWY 19

RICHLAND (R.LD)

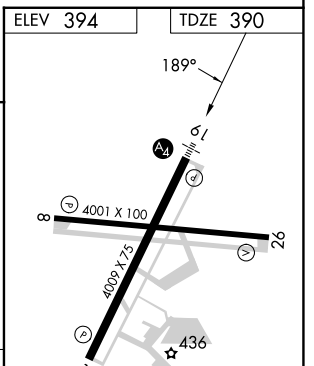
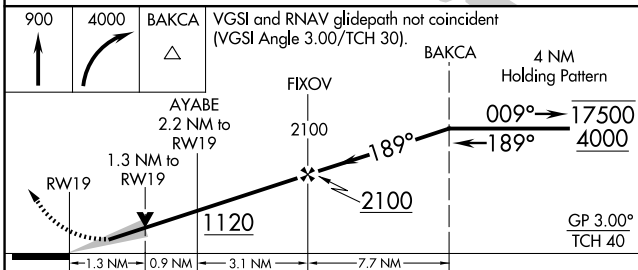
RNP APCH - GPS.	<p>MALS</p>	<p>MISSED APPROACH: Climb to 900 then climbing right turn to 4000 direct BAKCA and hold.</p> <p>*Missed approach requires minimum climb of 340 feet per NM to 2000; if unable to meet climb gradient, see RNAV (GPS) Y RWY 19.</p>
<p>⚠ For uncompensated Baro-VNAV systems, LNAV/VNAV NA below -12°C or above 54°C. Baro-VNAV and VDP NA when using PSC altimeter setting. For inop ALS when using PSC altimeter setting, increase LNAV Cats C and D visibility to 1 3/8 SM. When local altimeter setting not received, use PSC altimeter setting and increase LNAV/VNAV DA to 671 feet; increase all MDAs 20 feet and LNAV visibility Cats C and D 1/8 SM, and Circling visibility Cat C 1/4 SM.</p>		

AWOS-3PT 132.675	SPOKANE APP CON * 128.75 377.2	CLNC DEL 122.4	UNICOM 122.7 (CTAF) 📻
----------------------------	--	--------------------------	--



NW-1, 16 APR 2026 to 14 MAY 2026

NW-1, 16 APR 2026 to 14 MAY 2026



CATEGORY	A	B	C	D
LNAV/VNAV DA*	651-7/8 261 (300-7/8)			
LNAV MDA*	840-7/8 450 (500-7/8)	840-1 450 (500-1)		
CIRCLING	840-1 446 (500-1)	1000-1 606 (700-1)	1200-2 1/4 806 (900-2 1/4)	1960-3 1566 (1600-3)

REIL Rwy 1 and 19 **📻**
MIRL Rwy 1-19 and 8-26 **📻**