

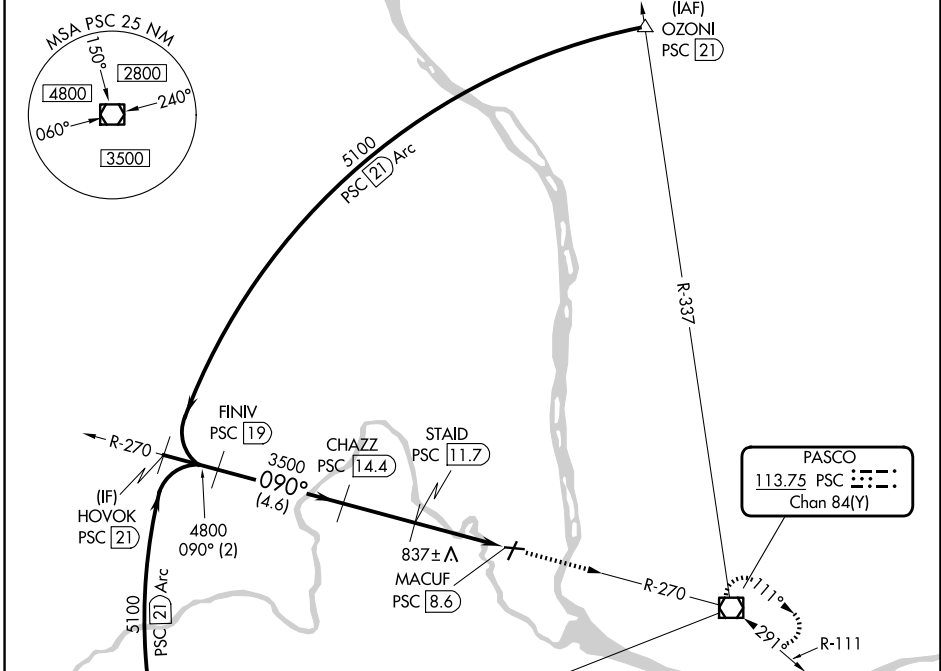
VOR/DME PSC <b>113.75</b> Chan <b>84(Y)</b>	APP CRS <b>090°</b>	Rwy Ldg TDZE Apt Elev <b>N/A</b> <b>N/A</b> <b>394</b>
---	------------------------	---

# VOR/DME-A RICHLAND (R.LD)

**NA** When local altimeter setting not received, use Pasco altimeter setting and increase all MDA 40 feet.

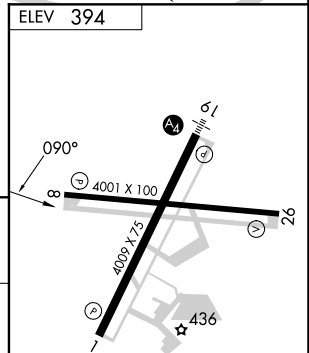
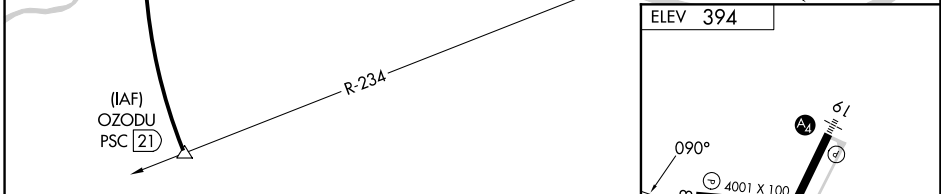
MISSED APPROACH: Climb to 3000 direct PSC VOR/DME and hold.

AWOS-3PT <b>132.675</b>	SPOKANE APP CON * <b>128.75 377.2</b>	CLNC DEL <b>122.4</b>	UNICOM <b>122.7 (CTAF)</b>
----------------------------	--	--------------------------	-------------------------------



NW-1, 16 APR 2026 to 14 MAY 2026

NW-1, 16 APR 2026 to 14 MAY 2026



	HOVOK PSC [21]	FINIV PSC [19]	CHAZZ PSC [14.4]	STAID PSC [11.7]	MACUF PSC [8.6]
	5100	4800	3500	1540	
	090°				
CATEGORY	A	B	C	D	
CIRCLING	1140-1	746 (800-1)	1200-2¼ 806 (900-2¼)	1940-3 1546 (1600-3)	

REIL Rwys 1 and 19

MIRL Rwy 1-19 and 8-26