

WAAS CH <b>86436</b> <b>W18A</b>	APP CRS <b>183°</b>	Rwy Ldg TDZE <b>467</b> Apt Elev <b>472</b>	<b>5002</b>
--	------------------------	---	-------------

# RNAV (GPS) RWY 18

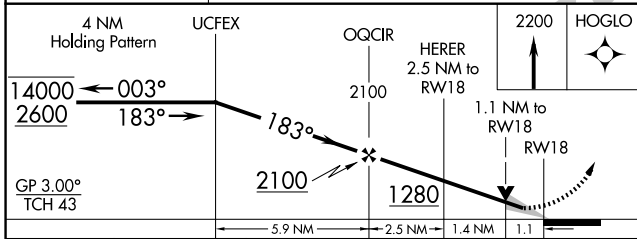
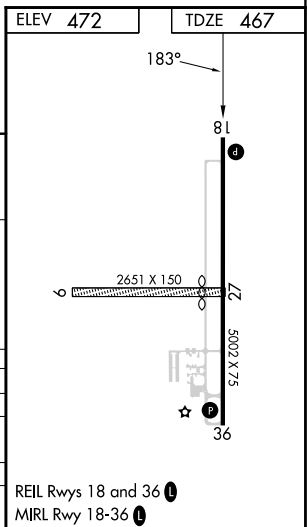
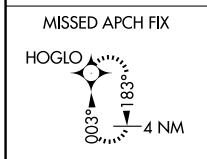
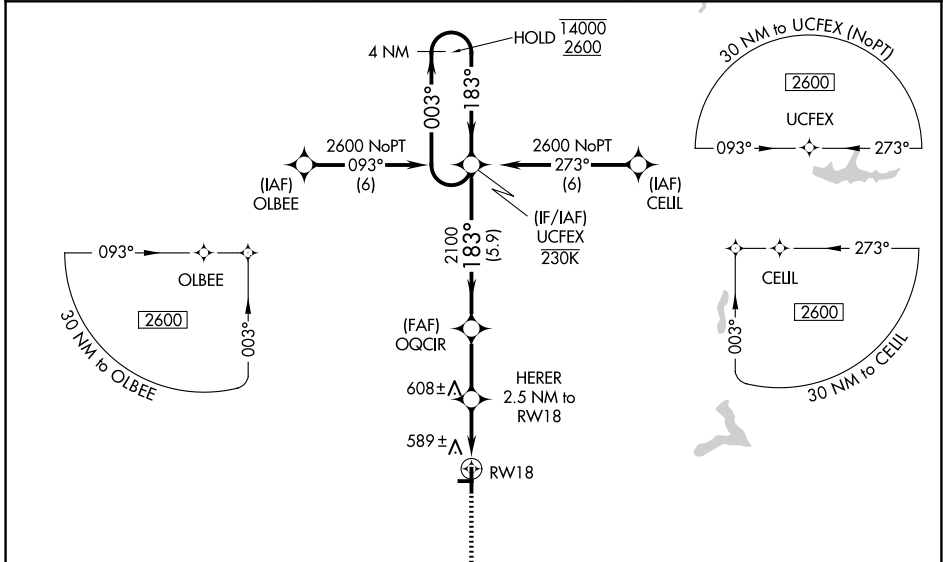
DAVISS COUNTY (DCY)

RNP APCH - GPS.

**⚠** Circling NA to Rws 9 and 27. Circling to Rwy 36 NA at night. For uncompensated Baro-VNAV systems, LNAV/VNAV NA below -15°C or above 54°C.

MISSED APPROACH: Climb to 2200 direct HOGLO and hold.

AWOS-3PT <b>119.075</b>	EVANSVILLE APP CON ★ <b>125.6 343.7</b>	UNICOM <b>122.8 (CTAF) 0</b>
----------------------------	--	---------------------------------



CATEGORY	A	B	C	D
LPV DA		778-1	311 (400-1)	
LNAV/VNAV DA		750-1	283 (300-1)	
LNAV MDA		840-1	373 (400-1)	
CIRCLING	1020-1 548 (600-1)	1060-1 588 (600-1)	1060-1½ 588 (600-1½)	1300-2¾ 828 (900-2¾)

EC-2, 16 APR 2026 to 14 MAY 2026

EC-2, 16 APR 2026 to 14 MAY 2026