

RADAR and DME required.

**TOP ALTITUDE:
ASSIGNED BY ATC**

MIAMI DEP CON
 (For BEECH-FLL Departing W, AARPS,
 BNICE, DORRL, FRSBE, HROCK, ZFP Transitions)
 126.05 251.1
 126.85 290.325
 (For BEECH-FLL Departing E, MAYNR Transition)
 ATIS
 120.55
 GND CON
 121.9
 POMPANO BEACH TOWER ★
 125.4 (CTAF)

LEE COUNTY
 114.15 RSW
 Chan 88 (Y)

PALM BEACH
 115.7 PBI
 Chan 104

FREEPORT
 113.2 ZFP
 Chan 79

DOLPHIN
 113.9 DHP
 Chan 86

FORT LAUDERDALE
 114.4 FLL
 Chan 91

BIMINI
 116.7 ZBV
 Chan 114

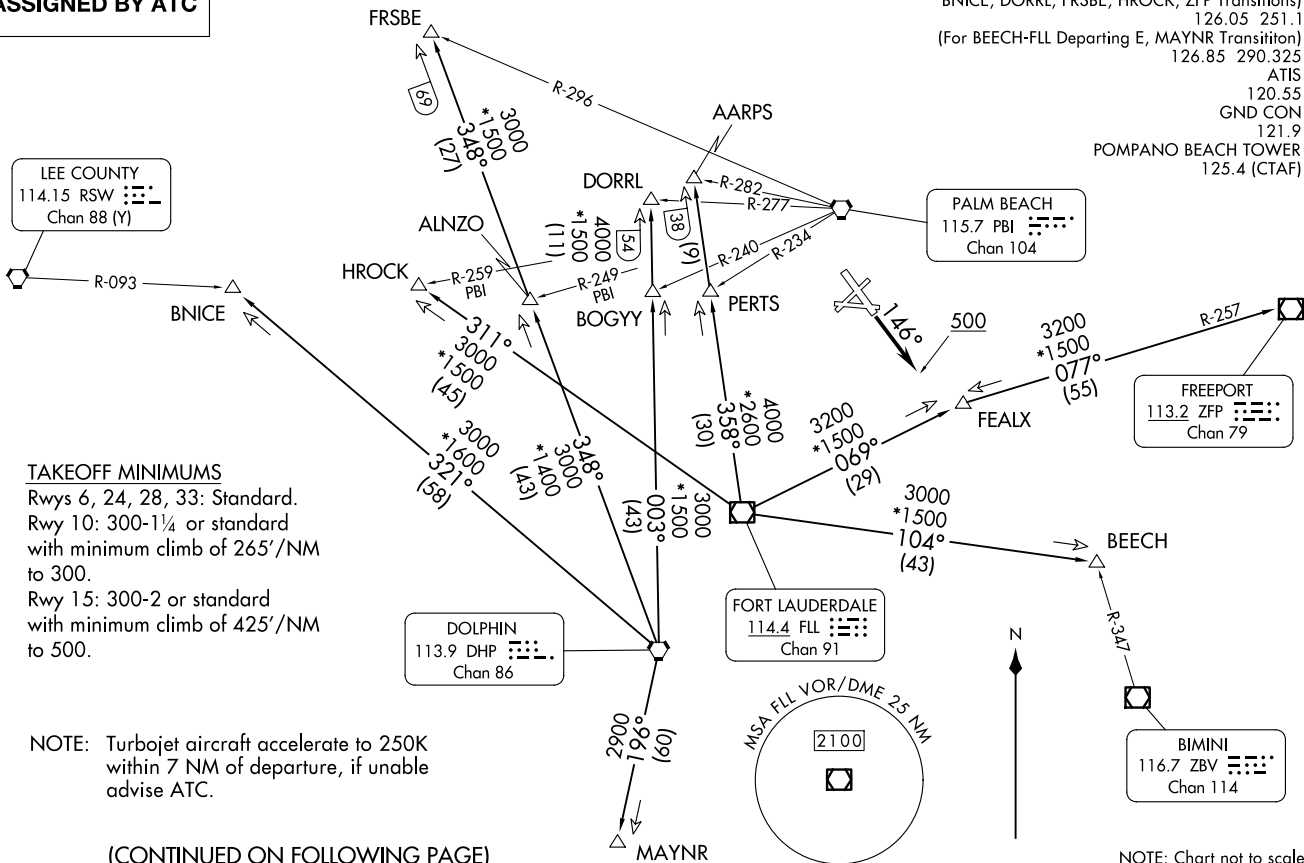
TAKEOFF MINIMUMS

Rwys 6, 24, 28, 33: Standard.
 Rwy 10: 300-1¼ or standard
 with minimum climb of 265'/NM
 to 300.
 Rwy 15: 300-2 or standard
 with minimum climb of 425'/NM
 to 500.

NOTE: Turbojet aircraft accelerate to 250K
 within 7 NM of departure, if unable
 advise ATC.

(CONTINUED ON FOLLOWING PAGE)

NOTE: Chart not to scale.



FORT LAUDERDALE TWO DEPARTURE
(FL12.FLL) 26DEC24

POMPANO BEACH, FLORIDA
POMPANO BEACH AIRPARK (PMP)

(FL12.FLL) 26DEC24
FORT LAUDERDALE TWO DEPARTURE

POMPANO BEACH AIRPARK (PMP)
POMPANO BEACH, FLORIDA

FORT LAUDERDALE TWO DEPARTURE



DEPARTURE ROUTE DESCRIPTION

TAKEOFF RUNWAYS 6, 10, 24, 28, 33: Climb on assigned heading, thence. . . .

TAKEOFF RUNWAY 15: Climb on heading 146° to 500, then climb on assigned heading, thence. . . .

. . . .maintain ATC assigned altitude, expect RADAR vectors to appropriate transition. Expect further clearance to filed altitude ten (10) minutes after departure.

AARPS TRANSITION (FLL2.AARPS): From over FLL VOR/DME on FLL R-358 to AARPS.

BEECH TRANSITION (FLL2.BEECH): From over FLL VOR/DME on FLL R-104 to BEECH.

BNICE TRANSITION (FLL2.BNICE): From over DHP VORTAC on DHP R-321 to BNICE.

DORRL TRANSITION (FLL2.DORRL): From over DHP VORTAC on DHP R-003 to DORRL.

FEALX TRANSITION (FLL2.FEALX): From over FLL VOR/DME on FLL R-069 to FEALX.

FREEPORT TRANSITION (FLL2.ZFP): From over FLL VOR/DME on FLL R-069 to FEALX, then on ZFP R-257 to ZFP VOR/DME.

FRSBE TRANSITION (FLL2.FRSBE): From over DHP VORTAC on DHP R-348 to FRSBE.

HROCK TRANSITION (FLL2.HROCK): From over FLL VOR/DME on FLL R-311 to HROCK.

MAYNR TRANSITION (FLL2.MAYNR): From over DHP VORTAC on DHP R-196 to MAYNR.

SE-3, 16 APR 2026 to 14 MAY 2026

SE-3, 16 APR 2026 to 14 MAY 2026