

(LIFRR2.LIFRR) 24081

AL-5972 (FAA)

POMPANO BEACH AIRPARK (PMP)
POMPANO BEACH, FLORIDA

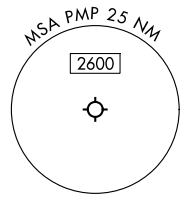
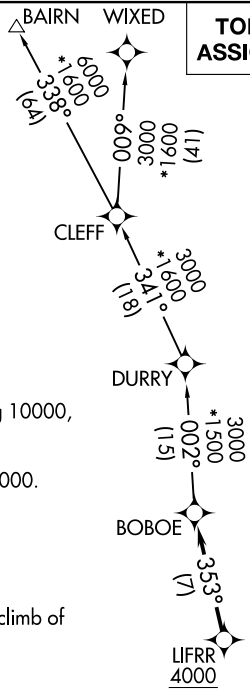
LIFRR TWO DEPARTURE (RNAV)

RNAV 1 - DME/DME/IRU or GPS.

RADAR required for non-GPS equipped aircraft.

**TOP ALTITUDE:
ASSIGNED BY ATC**

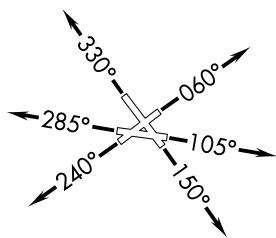
MIAMI DEP CON
126.05 251.1
ATIS
120.55
GND CON
121.9
POMPANO BEACH TOWER*
125.4 (CTAF)



NOTE: Accelerate to 250K until leaving 10000, if unable, advise ATC.
NOTE: Jet aircraft only.
NOTE: For aircraft filed at or below 12000.

TAKEOFF MINIMUMS

Rwys 6, 24, 28, 33: Standard.
Rwys 10, 15: Standard with minimum climb of 500'/NM to 520.



NOTE: Chart not to scale.

DEPARTURE ROUTE DESCRIPTION

- TAKEOFF RUNWAY 6: Climb on heading 060° or as assigned by ATC, thence. . .
- TAKEOFF RUNWAY 10: Climb on heading 105° or as assigned by ATC, thence. . .
- TAKEOFF RUNWAY 15: Climb on heading 150° or as assigned by ATC, thence. . .
- TAKEOFF RUNWAY 24: Climb on heading 240° or as assigned by ATC, thence. . .
- TAKEOFF RUNWAY 28: Climb on heading 285° or as assigned by ATC, thence. . .
- TAKEOFF RUNWAY 33: Climb on heading 330° or as assigned by ATC, thence. . .

. . .for RADAR vector to cross LIFRR at or above 4000, then on track 353° to BOBOE, then on assigned transition, maintain ATC assigned altitude, expect clearance to filed altitude within 10 minutes after departure.

BAIRN TRANSITION (LIFRR2.BAIRN)
WIXED TRANSITION (LIFRR2.WIXED)

LIFRR TWO DEPARTURE (RNAV)
(LIFRR2.LIFRR) 21MAR24

POMPANO BEACH, FLORIDA
POMPANO BEACH AIRPARK (PMP)

SE-3, 16 APR 2026 to 14 MAY 2026

SE-3, 16 APR 2026 to 14 MAY 2026