

WAAS CH 82500 W15A	APP CRS 150°	Rwy Ldg TDZE Apt Elev	4417 17 19
--	------------------------	-----------------------------	---------------------------------------

RNAV (GPS) RWY 15

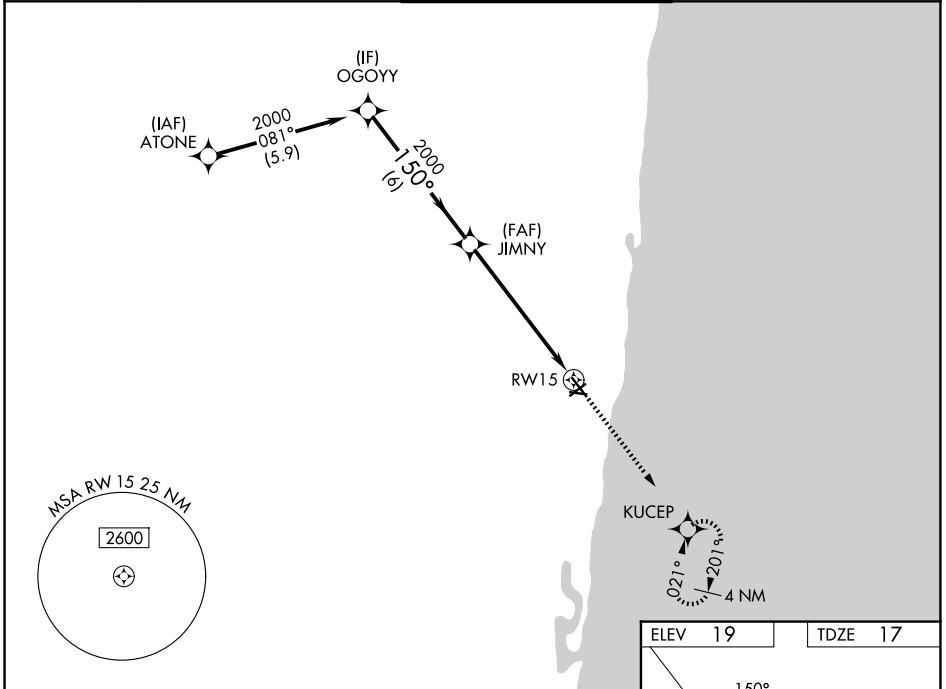
POMPANO BEACH AIRPARK (PMP)

RNP APCH - GPS.

⚠ Inop table does not apply. For uncompensated Baro-VNAV systems, LNAV/VNAV NA below 0°C or above 54°C. When local altimeter setting not received, use FXE altimeter setting. Rwy 15 helicopter visibility reduction below 3/4 SM NA. Circling Rwy 6, 10, 24, 28 NA at night.

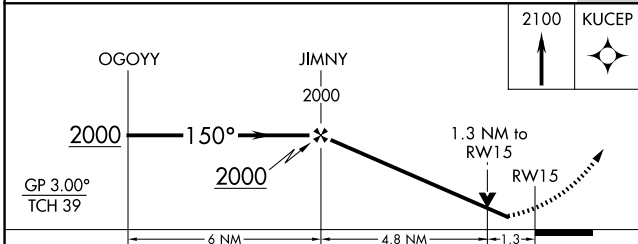
MALS MISSED APPROACH: Climb to 2100 direct KUCEP and hold, climb-in-hold to 5000.

ATIS 120.55	MIAMI APP CON 119.7 306.3	POMPANO BEACH TOWER ★ 125.4 (CTAF)	GND CON 121.9	UNICOM 122.95
-----------------------	-------------------------------------	--	-------------------------	-------------------------

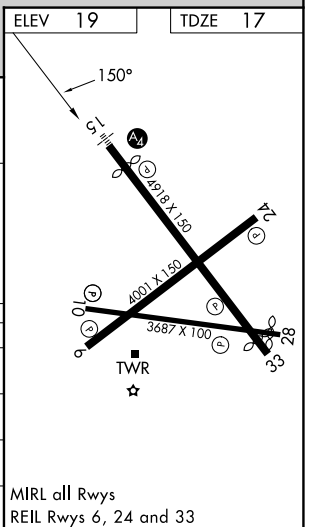


SE-3, 16 APR 2026 to 14 MAY 2026

SE-3, 16 APR 2026 to 14 MAY 2026



CATEGORY	A	B	C	D
LPV DA	296-1	279 (300-1)		NA
LNAV/VNAV DA	399-1	382 (400-1)		NA
LNAV MDA	480-1	463 (500-1)		NA
CIRCLING	660-1	641 (700-1)		NA



MIRL all Rwys
REIL Rws 6, 24 and 33