

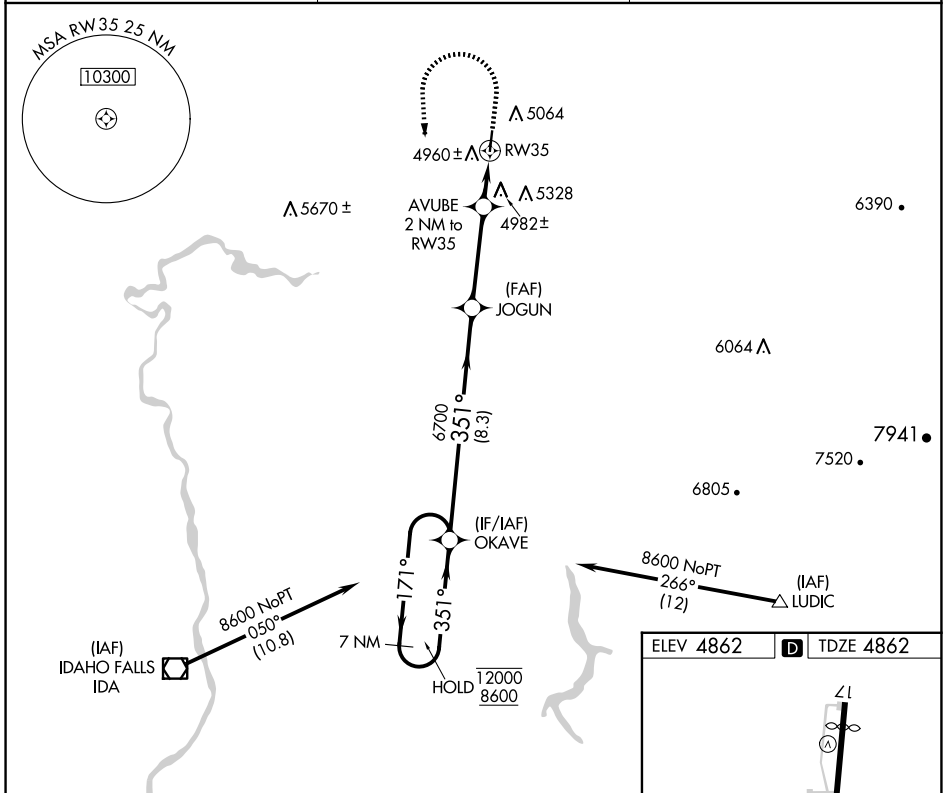
APP CRS 351°	Rwy Ldg TDZE Apt Elev	3900 4862 4862
------------------------	-----------------------------	---

RNAV (GPS) RWY 35

REXBURG-MADISON COUNTY (R.X.E)

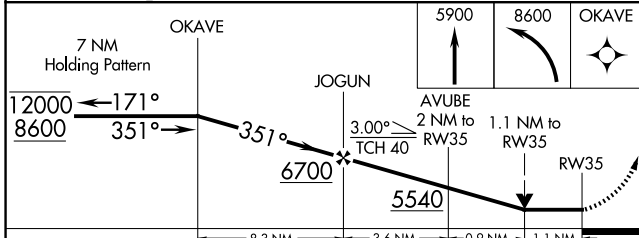
RNP APCH - GPS.	MISSED APPROACH: Climb to 5900 then climbing left turn to 8600 direct OKAVE and hold.
Rwy 35 helicopter visibility reduction below 3/4 SM NA.	

ASOS 135.075	SALT LAKE CENTER 128.35 239.25	UNICOM 122.8 (CTAF) 0
------------------------	--	---------------------------------

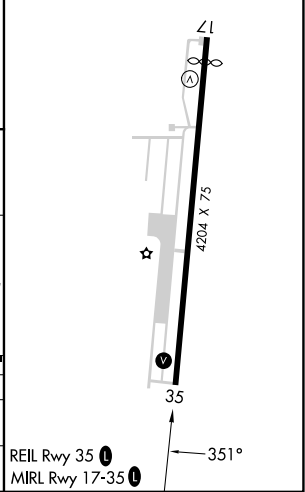


NW-1, 16 APR 2026 to 14 MAY 2026

NW-1, 16 APR 2026 to 14 MAY 2026



ELEV 4862	TDZE 4862
-----------	-----------



CATEGORY	A	B	C	D
LNVA MDA	5240-1 378 (400-1)			
CIRCLING	5380-1 518 (600-1)	5580-1 718 (800-1)	5680-2½ 818 (900-2½)	5760-3 898 (900-3)