

LOC I-RVL	APP CRS	Rwy Idg	5001
109.3	059°	TDZE	819
		Apt Elev	819

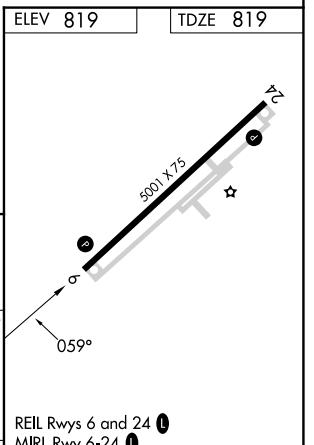
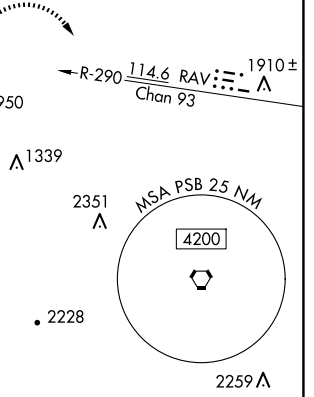
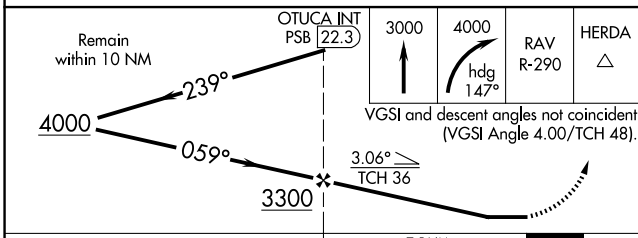
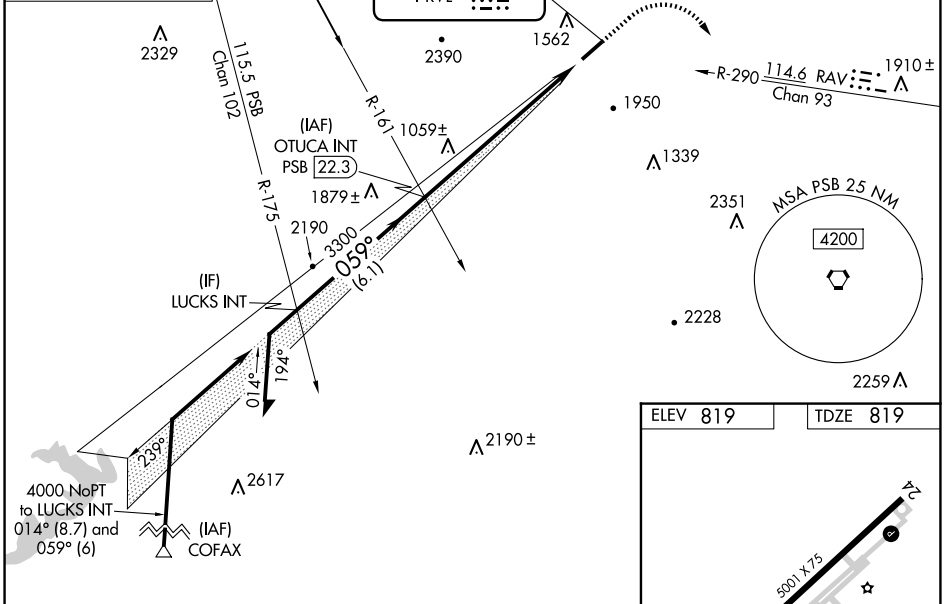
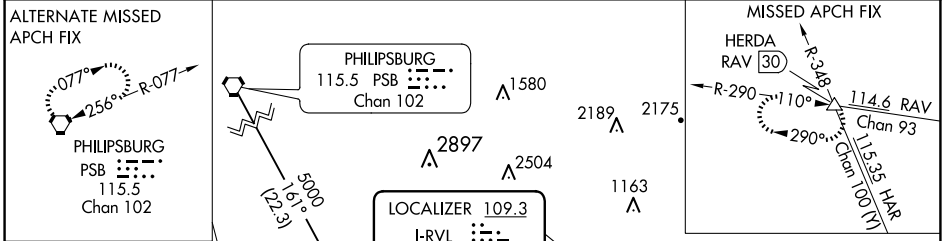
LOC RWY 6

MIFFLIN COUNTY (RVL)

NA Rwy 6 helicopter visibility reduction below 3/4 SM NA. VDP NA with State College altimeter setting. When local altimeter setting not received, use State College altimeter setting and increase all MDAs 100 feet.

MISSED APPROACH: Climb to 3000 then climbing right turn to 4000 on heading 147° and RAV VORTAC R-290 to HERDA INT/RAV 30 DME and hold.

AWOS-3PT 123.85	NEW YORK CENTER 134.8 338.3	UNICOM 122.7 (CTAF)
---------------------------	---------------------------------------	-------------------------------



CATEGORY	A	B	C	D	FAF to MAP 7.5 NM					
S-6	1840-1 1/4 1021 (1100-1 1/4)	1840-1 1/2 1021 (1100-1 1/2)	1840-3	1021 (1100-3)	Knots	60	90	120	150	180
					Min:Sec	7:30	5:00	3:45	3:00	2:30

NE-4, 16 APR 2026 to 14 MAY 2026

NE-4, 16 APR 2026 to 14 MAY 2026