

WAAS CH <b>86444</b> <b>W06A</b>	APP CRS <b>059°</b>	Rwy Idg TDZE Apt Elev	<b>5001</b> <b>819</b> <b>819</b>
--	------------------------	-----------------------------	---

# RNAV (GPS) RWY 6

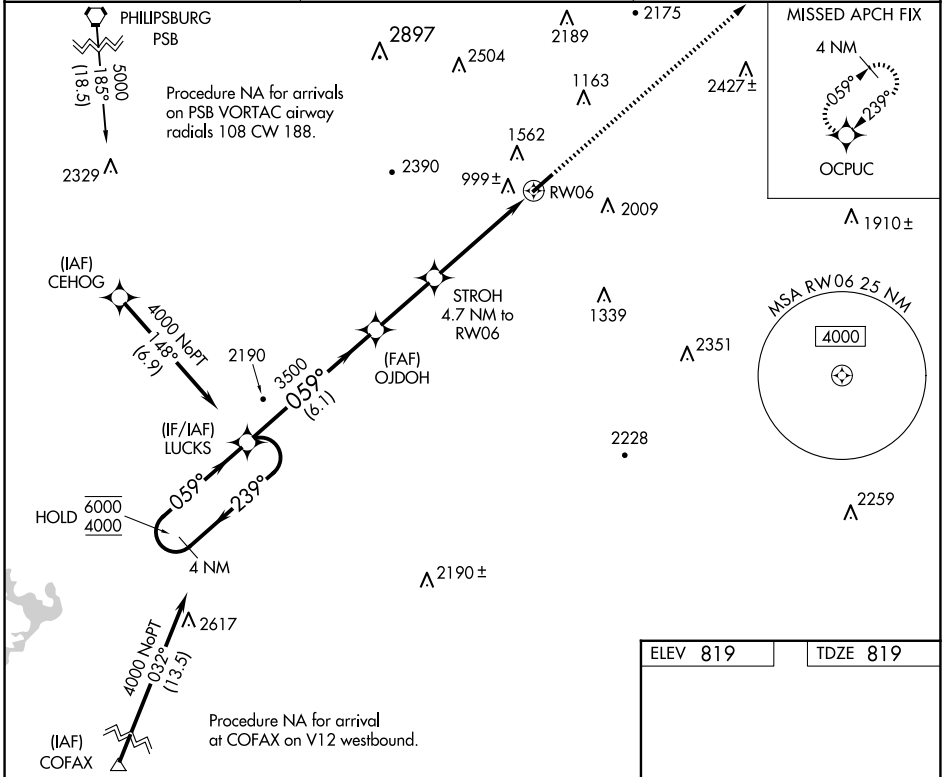
MIFFLIN COUNTY (R.V.L.)

RNP APCH - GPS.

▼  
▲ Rwy 6 helicopter visibility reduction below 3/4 SM NA. Baro-VNAV NA.

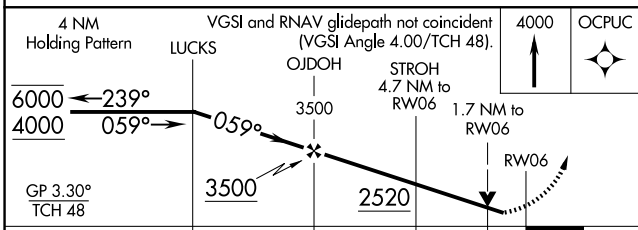
MISSED APPROACH:  
Climb to 4000 direct  
OCPU and hold.

AWOS-3PT <b>123.85</b>	NEW YORK CENTER <b>134.8 338.3</b>	UNICOM <b>122.7 (CTAF)</b>
---------------------------	---------------------------------------	-------------------------------



NE-4, 16 APR 2026 to 14 MAY 2026

NE-4, 16 APR 2026 to 14 MAY 2026



CATEGORY	A	B	C	D
LPV DA		1314-1 3/8	495 (500-1 1/8)	
LNAV/DA VNAV		1506-2	687 (700-2)	
LNAV MDA	1580-1 761 (800-1)	1580-1 1/4 761 (800-1 1/4)	1580-2 1/2	761 (800-2 1/2)

