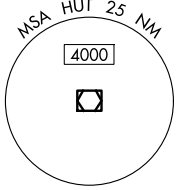
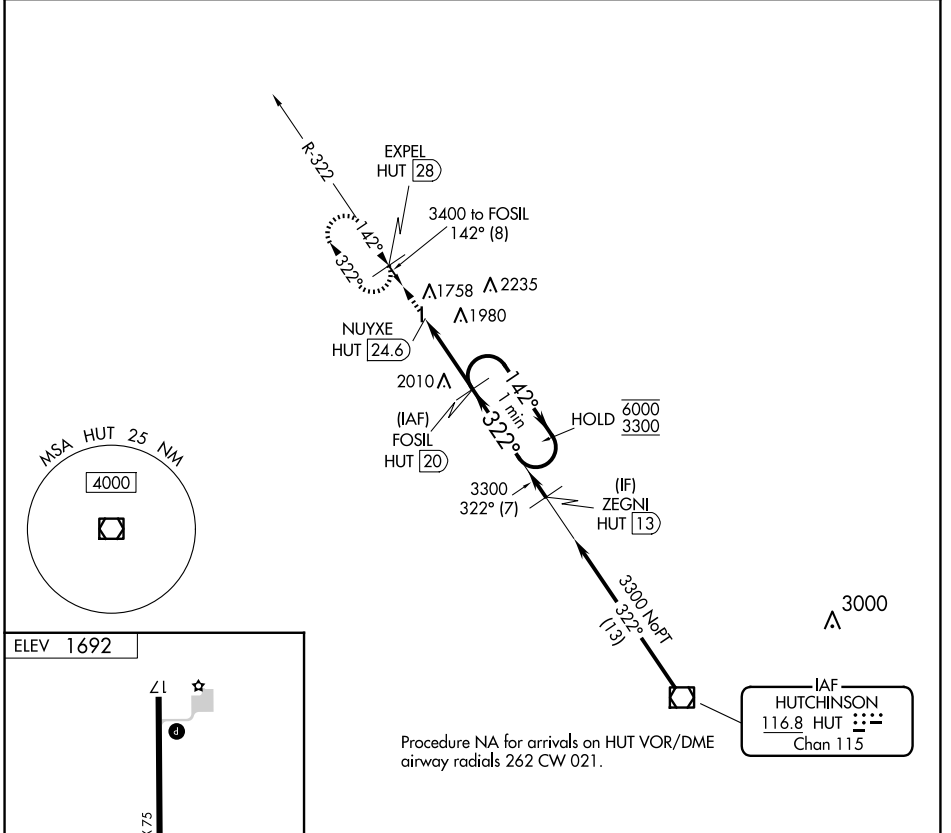


VOR/DME HUT 116.8 Chan 115	APP CRS 322°	Rwy Idg TDZE Apt Elev	N/A N/A 1692
--	------------------------	-----------------------------	---

VOR-A
LYONS-RICE COUNTY MUNI (LYO)

DME required.	MISSED APPROACH: Climb to 3400 on HUT VOR/DME R-322 to EXPEL/HUT 28 DME and hold.
⚠ Circling to Rwy 17 NA at night. When local altimeter setting not received, use Hutchinson altimeter setting.	

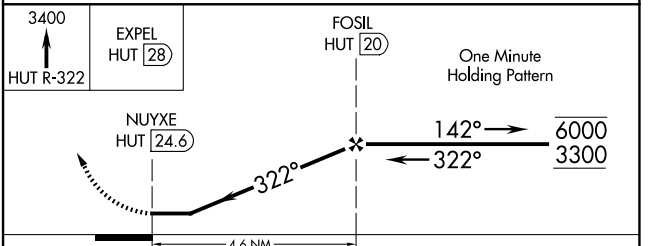
AWOS-3P 119.925	KANSAS CITY CENTER 118.8 322.425	UNICOM 122.8 (CTAF) 0
---------------------------	--	---------------------------------



ELEV 1692

4400 X 7.5
0.4% UP
35

MIRL Rwy 17-35 **0**
REL Rws 17 and 35 **0**



CATEGORY	A	B	C	D
C CIRCLING	2400-1	708 (800-1)		NA

NC-2, 16 APR 2026 to 14 MAY 2026

NC-2, 16 APR 2026 to 14 MAY 2026