

CORRI FOUR DEPARTURE (OBSTACLE) (CORRI4.CORRI)

OCEANSIDE, CALIFORNIA

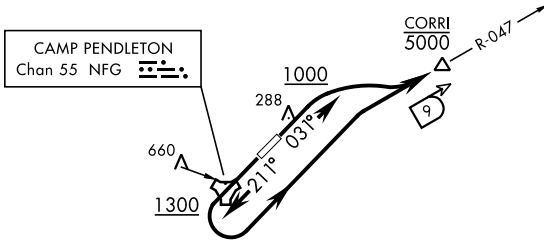
ATIS ★ 285.45
 CLNC DEL
 134.675 271.6
 GND CON
 134.675 360.2
 TOWER★
 128.775 340.2
 SOCIAL DEP CON
 127.3 323.0

RADAR required

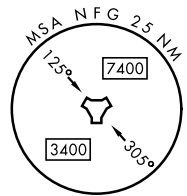
Rwy	Knots	60	120	180	240	300	360
3	V/V(fpm)	335	670	1005	1340	1675	2010
21	V/V(fpm)	442	884	1326	1768	2210	2652

Minimum Climb Rate to 1000

Do not exceed 200 KIAS until intercepting NFG TACAN R-047.



CAMP PENDLETON
 Chan 55 NFG



NOT FOR CIVIL USE
NOT FOR USE BY CAT D/E AIRCRAFT

DEPARTURE ROUTE DESCRIPTION

TAKEOFF RWY 3: Climb on heading 031° to 1000 then climbing right turn to 3800 and intercept NFG TACAN R-047 to CORRI.

TAKEOFF RWY 21: Climb on heading 211° to 1300 then climbing left turn to 3800 and intercept NFG TACAN R-047 to CORRI.